

General Assembly
Permanent Council

General Secretariat

Chief of Staff

Office of the
Assistant Secretary
General

Chief of Staff
ASG

Department of Planning,
Control, and Evaluation

Department of External
Relations

Summits Department

Department of Press and
Communications

Department of Legal
Services

Office of Conferences
and Meetings

Office of Cultural Services

Office of Protocol

Coordinating Office for the Offices
and Units of the General Secretariat
in the Member States

Office of the Secretariat to the
GA, the Meeting of
Consultation, the Permanent
Council, and Subsidiary Organs

Coordinating Office
for Specialized Units

Secretariat for
Multidimensional
Security

Secretariat for
Political Affairs

Department of
International Legal Affairs

Executive Secretariat for
Integral Development

Secretariat for
Administration and
Finance

CICTE Secretariat

Department for the
Prevention of Threats
against Public Security

Executive Secretariat
of CICAD

Department for the
Promotion of Democracy

Department for the
Promotion of Governance

Department of
Crisis Prevention and
Special Missions

International Law Office

Judicial Cooperation
Office

Department of Follow-up,
Policies, and Programs

Department of Trade,
Tourism, and
Competitiveness

Department of Social
Development and
Employment

Department of Education,
Culture, Science,
and Technology

Department of
Sustainable Development

Department of Human
Resources

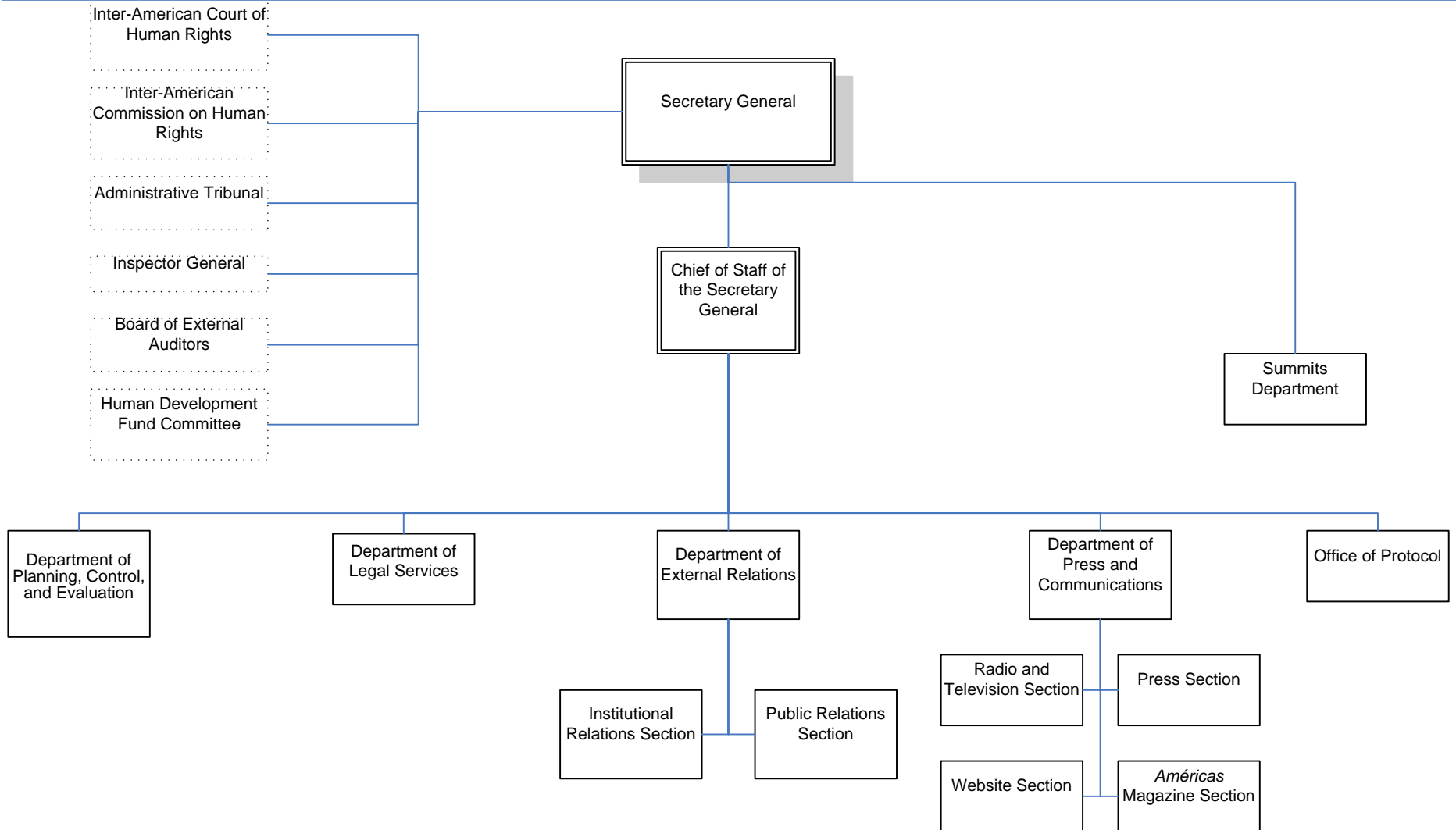
Office of Information and
Technology Services

Office of General Services

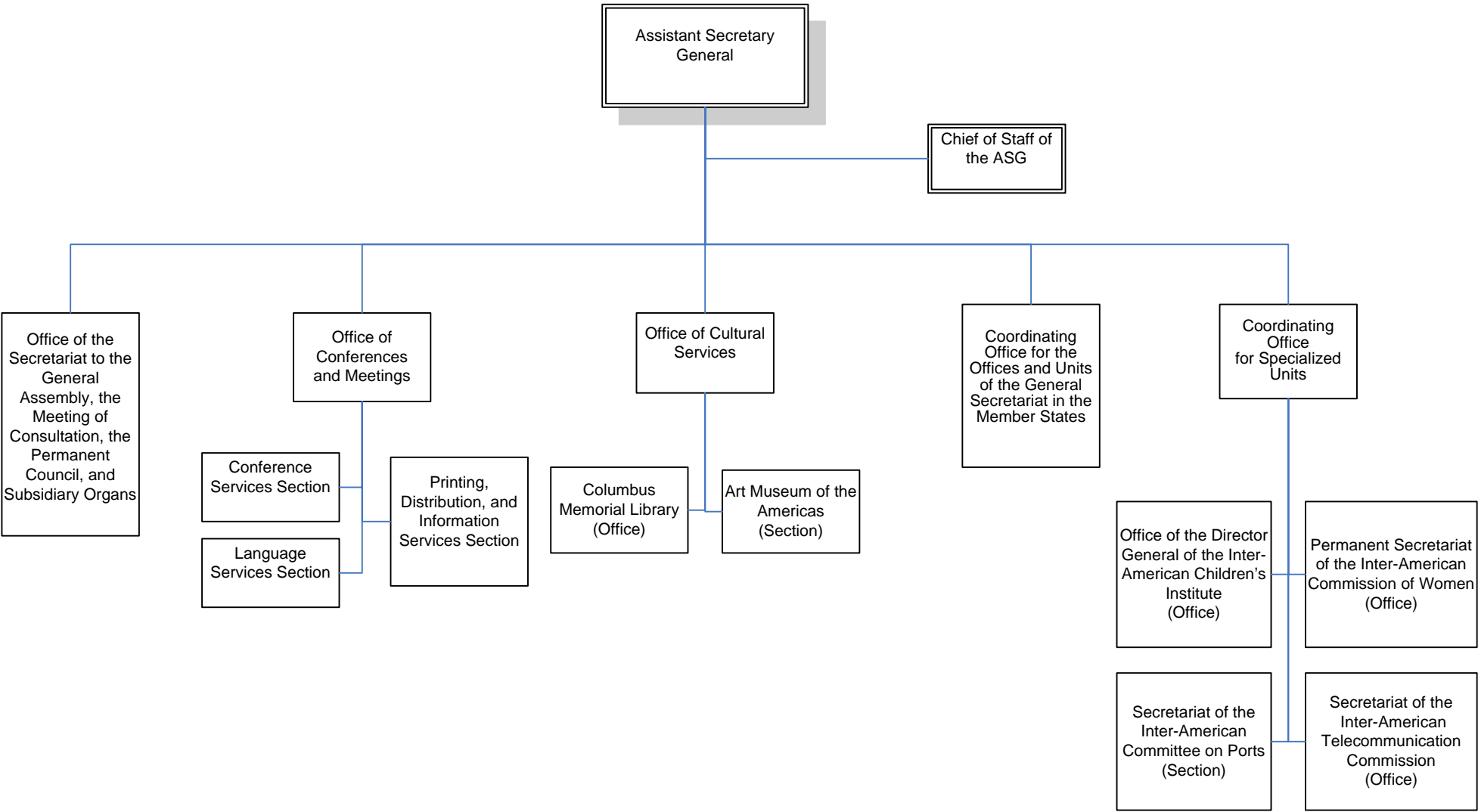
Department of Budgetary
and Financial Services

Office of Procurement
Services

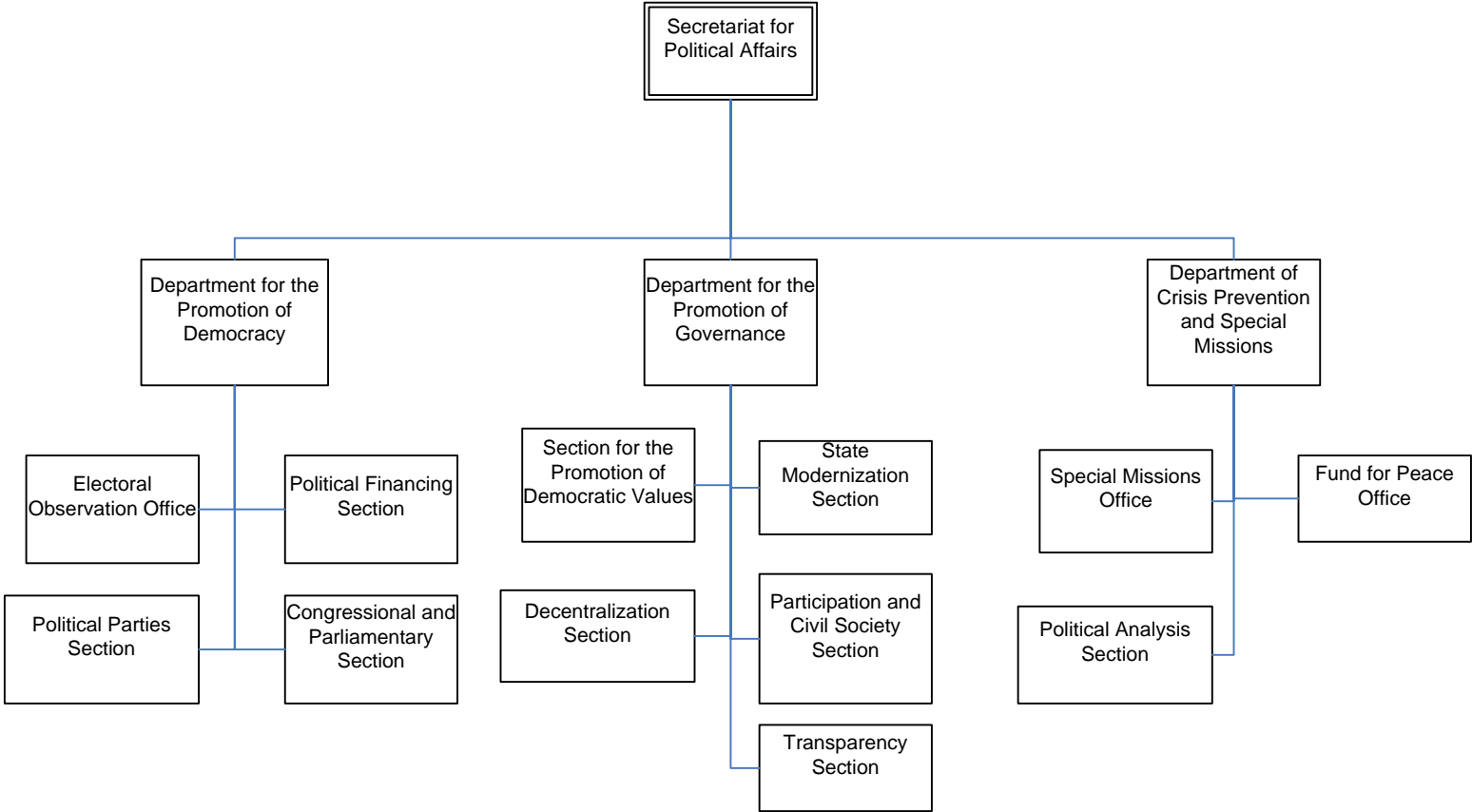
Organizational Structure Office of the Secretary General



Organizational Structure Office of the Assistant Secretary General

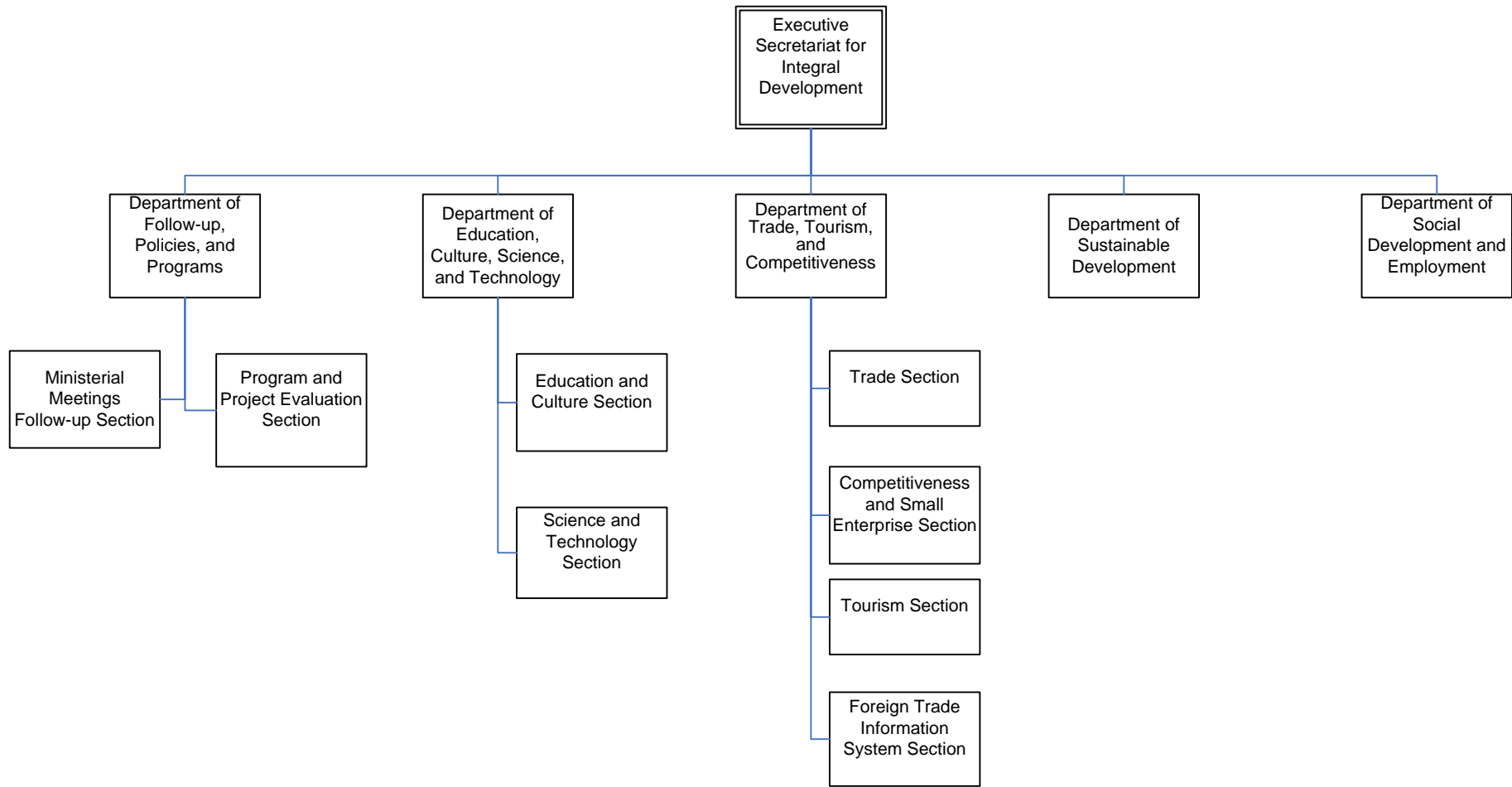


Organizational Structure Secretariat for Political Affairs

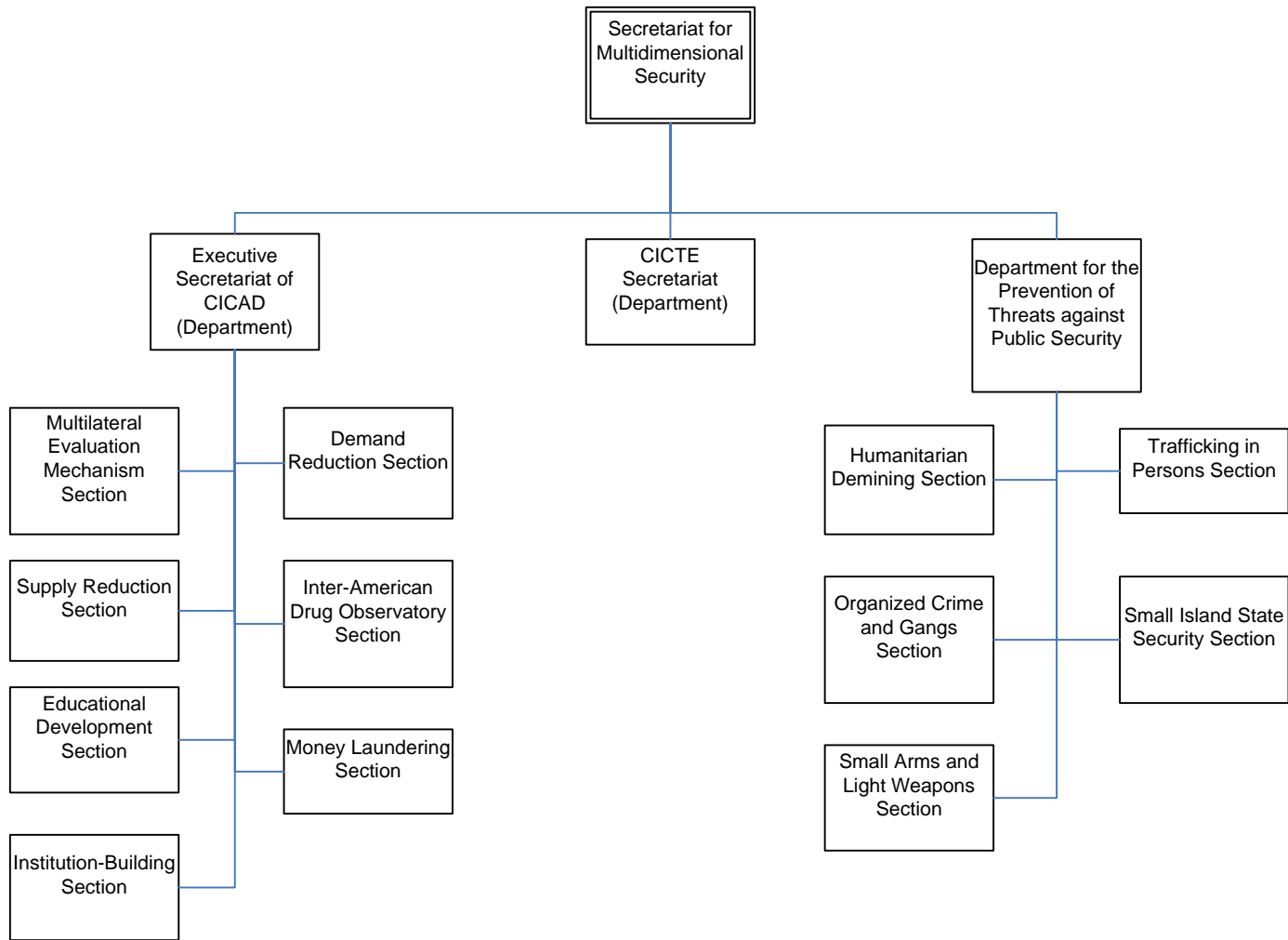


Organizational Structure

Executive Secretariat for Integral Development

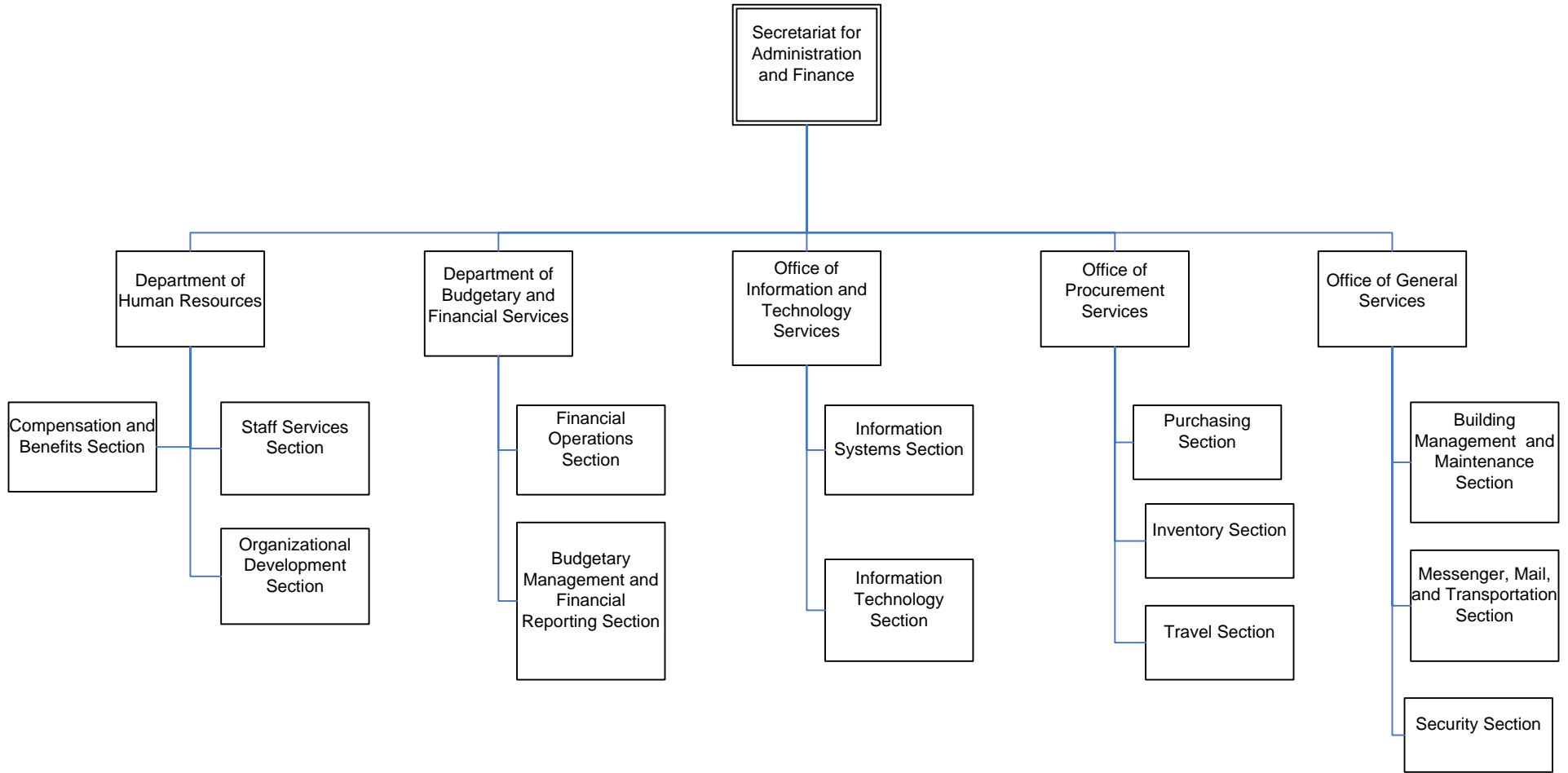


Organizational Structure Secretariat for Multidimensional Security



Organizational Structure

Secretariat for Administration and Finance



Organizational Structure

Department of International Legal Affairs

