

PROJECT NAME: _____
 DRAWING NO: _____

DATE: _____
 SCALE: _____
 SHEET NO: _____

REVISIONS:
 NO. DATE DESCRIPTION
 1 11/27/71 ISSUED FOR BID
 2 11/27/71 ISSUED FOR BID

Building Renovations
 Organization of American States
 Main Building
 Washington, District of Columbia

PROJECT NAME: _____
 DRAWING NO: _____

ELECTRICAL VIDEO SMOKE AND PLANE DETECTION SYSTEM SPECIFICATION

SCALE: NONE
 SHEET NO: 11
 DRAWING NO: 8374-0000
 DATE: 11/22/71
 SHEET NO: E-1A

ELECTRICAL SPECIFICATION - CONTINUED

16 SUBSTANCES

1. MATERIALS AND EQUIPMENT REMAINING SUBSTANTIAL SHALL BE REUSED. MATERIALS WHICH ARE NOT REUSABLE SHALL BE RECYCLED, REFINED, OR REUSED IN ANOTHER MANNER.
2. SYSTEMS WHICH ARE NOT REUSABLE SHALL BE REMOVED AND RECYCLED, REFINED, OR REUSED IN ANOTHER MANNER.
3. WASTE DISPOSAL SHALL BE IN ACCORDANCE WITH LOCAL AND FEDERAL REGULATIONS.
4. WASTE DISPOSAL SHALL BE IN ACCORDANCE WITH LOCAL AND FEDERAL REGULATIONS.
5. WASTE DISPOSAL SHALL BE IN ACCORDANCE WITH LOCAL AND FEDERAL REGULATIONS.
6. WASTE DISPOSAL SHALL BE IN ACCORDANCE WITH LOCAL AND FEDERAL REGULATIONS.
7. WASTE DISPOSAL SHALL BE IN ACCORDANCE WITH LOCAL AND FEDERAL REGULATIONS.
8. WASTE DISPOSAL SHALL BE IN ACCORDANCE WITH LOCAL AND FEDERAL REGULATIONS.
9. WASTE DISPOSAL SHALL BE IN ACCORDANCE WITH LOCAL AND FEDERAL REGULATIONS.
10. WASTE DISPOSAL SHALL BE IN ACCORDANCE WITH LOCAL AND FEDERAL REGULATIONS.

17 DETAIL, STORAGE AND HANDLING

1. MATERIALS SHALL BE STORED IN A DRY, CLEAN, AND PROTECTED AREA TO PREVENT DAMAGE TO THE MATERIALS.
2. MATERIALS SHALL BE STORED IN A DRY, CLEAN, AND PROTECTED AREA TO PREVENT DAMAGE TO THE MATERIALS.
3. MATERIALS SHALL BE STORED IN A DRY, CLEAN, AND PROTECTED AREA TO PREVENT DAMAGE TO THE MATERIALS.
4. MATERIALS SHALL BE STORED IN A DRY, CLEAN, AND PROTECTED AREA TO PREVENT DAMAGE TO THE MATERIALS.
5. MATERIALS SHALL BE STORED IN A DRY, CLEAN, AND PROTECTED AREA TO PREVENT DAMAGE TO THE MATERIALS.

18 GENERAL REQUIREMENTS OF CONTRACT DOCUMENTS

1. THE CONTRACT DOCUMENTS ATTACHED TO THIS SPECIFICATION SHALL BE READ AND UNDERSTOOD BY THE CONTRACTOR.
2. THE CONTRACTOR SHALL BE RESPONSIBLE FOR OBTAINING ALL NECESSARY PERMITS AND APPROVALS FROM THE LOCAL, STATE, AND FEDERAL AUTHORITIES.
3. THE CONTRACTOR SHALL BE RESPONSIBLE FOR OBTAINING ALL NECESSARY PERMITS AND APPROVALS FROM THE LOCAL, STATE, AND FEDERAL AUTHORITIES.
4. THE CONTRACTOR SHALL BE RESPONSIBLE FOR OBTAINING ALL NECESSARY PERMITS AND APPROVALS FROM THE LOCAL, STATE, AND FEDERAL AUTHORITIES.

19 MANUFACTURER

1. APPROVED MANUFACTURERS: _____
2. APPROVED MANUFACTURERS: _____
3. APPROVED MANUFACTURERS: _____
4. APPROVED MANUFACTURERS: _____
5. APPROVED MANUFACTURERS: _____

20 VIDEO SMOKE FLAME AND PLANE DETECTION SYSTEM

1. EACH CAMERA SHALL BE AN OPTICALLY CLEAN CHANGING OF DETECTION MODE OF 1/2 INCH DIAMETER AND BE APPROVED FOR USE AS A VIDEO SMOKE FLAME AND PLANE DETECTOR.
2. EACH CAMERA SHALL BE CAPABLE OF DETECTING AND RECORDING VIDEO IMAGES OF PLANE DETECTION MODE OVER A 180 DEGREE FIELD OF VIEW.
3. EACH CAMERA SHALL BE CAPABLE OF DETECTING AND RECORDING VIDEO IMAGES OF PLANE DETECTION MODE OVER A 180 DEGREE FIELD OF VIEW.
4. EACH CAMERA SHALL BE CAPABLE OF DETECTING AND RECORDING VIDEO IMAGES OF PLANE DETECTION MODE OVER A 180 DEGREE FIELD OF VIEW.

21 NETWORK VIDEO RECORDER (VIDEO STORE)

1. EACH VIDEO RECORDER SHALL BE CAPABLE OF RECORDING AND PLAYBACK VIDEO IMAGES OF PLANE DETECTION MODE OVER A 180 DEGREE FIELD OF VIEW.
2. EACH VIDEO RECORDER SHALL BE CAPABLE OF RECORDING AND PLAYBACK VIDEO IMAGES OF PLANE DETECTION MODE OVER A 180 DEGREE FIELD OF VIEW.
3. EACH VIDEO RECORDER SHALL BE CAPABLE OF RECORDING AND PLAYBACK VIDEO IMAGES OF PLANE DETECTION MODE OVER A 180 DEGREE FIELD OF VIEW.
4. EACH VIDEO RECORDER SHALL BE CAPABLE OF RECORDING AND PLAYBACK VIDEO IMAGES OF PLANE DETECTION MODE OVER A 180 DEGREE FIELD OF VIEW.

22 PERFORMANCE

1. THE SYSTEM SHALL PROVIDE THE FOLLOWING FUNCTIONS: _____
2. THE SYSTEM SHALL PROVIDE THE FOLLOWING FUNCTIONS: _____
3. THE SYSTEM SHALL PROVIDE THE FOLLOWING FUNCTIONS: _____
4. THE SYSTEM SHALL PROVIDE THE FOLLOWING FUNCTIONS: _____
5. THE SYSTEM SHALL PROVIDE THE FOLLOWING FUNCTIONS: _____

34 MANUFACTURER FIELD SERVICE AND QUALITY CONTROL

1. MANUFACTURER FIELD SERVICE AND QUALITY CONTROL SHALL BE PROVIDED BY THE MANUFACTURER.
2. MANUFACTURER FIELD SERVICE AND QUALITY CONTROL SHALL BE PROVIDED BY THE MANUFACTURER.
3. MANUFACTURER FIELD SERVICE AND QUALITY CONTROL SHALL BE PROVIDED BY THE MANUFACTURER.
4. MANUFACTURER FIELD SERVICE AND QUALITY CONTROL SHALL BE PROVIDED BY THE MANUFACTURER.
5. MANUFACTURER FIELD SERVICE AND QUALITY CONTROL SHALL BE PROVIDED BY THE MANUFACTURER.

35 DECLARATION

1. I, THE CONTRACTOR, DECLARE THAT I AM A RESIDENT OF THE STATE OF TEXAS.
2. I, THE CONTRACTOR, DECLARE THAT I AM A RESIDENT OF THE STATE OF TEXAS.
3. I, THE CONTRACTOR, DECLARE THAT I AM A RESIDENT OF THE STATE OF TEXAS.
4. I, THE CONTRACTOR, DECLARE THAT I AM A RESIDENT OF THE STATE OF TEXAS.
5. I, THE CONTRACTOR, DECLARE THAT I AM A RESIDENT OF THE STATE OF TEXAS.

36 TESTING, MAINTENANCE AND SERVICE

1. TESTING, MAINTENANCE AND SERVICE SHALL BE PROVIDED BY THE CONTRACTOR.
2. TESTING, MAINTENANCE AND SERVICE SHALL BE PROVIDED BY THE CONTRACTOR.
3. TESTING, MAINTENANCE AND SERVICE SHALL BE PROVIDED BY THE CONTRACTOR.
4. TESTING, MAINTENANCE AND SERVICE SHALL BE PROVIDED BY THE CONTRACTOR.
5. TESTING, MAINTENANCE AND SERVICE SHALL BE PROVIDED BY THE CONTRACTOR.

37 INSTALLATION

1. ALL WORK SHALL BE INSTALLED IN ACCORDANCE WITH THE MANUFACTURER'S INSTRUCTIONS.
2. ALL WORK SHALL BE INSTALLED IN ACCORDANCE WITH THE MANUFACTURER'S INSTRUCTIONS.
3. ALL WORK SHALL BE INSTALLED IN ACCORDANCE WITH THE MANUFACTURER'S INSTRUCTIONS.
4. ALL WORK SHALL BE INSTALLED IN ACCORDANCE WITH THE MANUFACTURER'S INSTRUCTIONS.
5. ALL WORK SHALL BE INSTALLED IN ACCORDANCE WITH THE MANUFACTURER'S INSTRUCTIONS.

38 TESTING, MAINTENANCE AND SERVICE

1. TESTING, MAINTENANCE AND SERVICE SHALL BE PROVIDED BY THE CONTRACTOR.
2. TESTING, MAINTENANCE AND SERVICE SHALL BE PROVIDED BY THE CONTRACTOR.
3. TESTING, MAINTENANCE AND SERVICE SHALL BE PROVIDED BY THE CONTRACTOR.
4. TESTING, MAINTENANCE AND SERVICE SHALL BE PROVIDED BY THE CONTRACTOR.
5. TESTING, MAINTENANCE AND SERVICE SHALL BE PROVIDED BY THE CONTRACTOR.

39 TESTING, MAINTENANCE AND SERVICE

1. TESTING, MAINTENANCE AND SERVICE SHALL BE PROVIDED BY THE CONTRACTOR.
2. TESTING, MAINTENANCE AND SERVICE SHALL BE PROVIDED BY THE CONTRACTOR.
3. TESTING, MAINTENANCE AND SERVICE SHALL BE PROVIDED BY THE CONTRACTOR.
4. TESTING, MAINTENANCE AND SERVICE SHALL BE PROVIDED BY THE CONTRACTOR.
5. TESTING, MAINTENANCE AND SERVICE SHALL BE PROVIDED BY THE CONTRACTOR.

40 TESTING, MAINTENANCE AND SERVICE

1. TESTING, MAINTENANCE AND SERVICE SHALL BE PROVIDED BY THE CONTRACTOR.
2. TESTING, MAINTENANCE AND SERVICE SHALL BE PROVIDED BY THE CONTRACTOR.
3. TESTING, MAINTENANCE AND SERVICE SHALL BE PROVIDED BY THE CONTRACTOR.
4. TESTING, MAINTENANCE AND SERVICE SHALL BE PROVIDED BY THE CONTRACTOR.
5. TESTING, MAINTENANCE AND SERVICE SHALL BE PROVIDED BY THE CONTRACTOR.

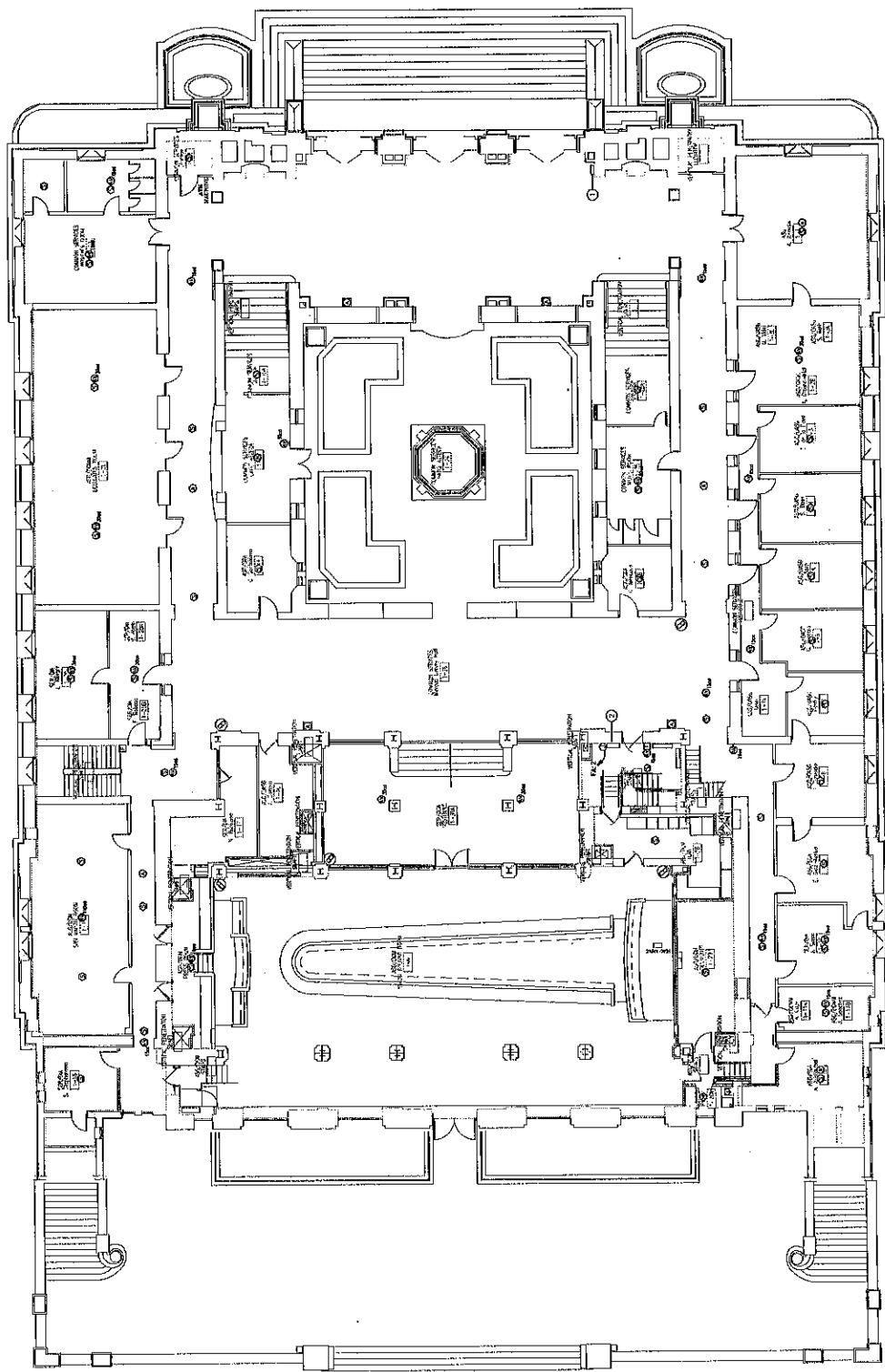
NO.	DATE	DESCRIPTION
01	11/02/11	ISSUED FOR BID
02	11/02/11	ISSUED FOR BID
03	11/02/11	ISSUED FOR BID
04	11/02/11	ISSUED FOR BID
05	11/02/11	ISSUED FOR BID
06	11/02/11	ISSUED FOR BID
07	11/02/11	ISSUED FOR BID
08	11/02/11	ISSUED FOR BID
09	11/02/11	ISSUED FOR BID
10	11/02/11	ISSUED FOR BID
11	11/02/11	ISSUED FOR BID
12	11/02/11	ISSUED FOR BID
13	11/02/11	ISSUED FOR BID
14	11/02/11	ISSUED FOR BID
15	11/02/11	ISSUED FOR BID
16	11/02/11	ISSUED FOR BID
17	11/02/11	ISSUED FOR BID
18	11/02/11	ISSUED FOR BID
19	11/02/11	ISSUED FOR BID
20	11/02/11	ISSUED FOR BID

PROJECT NAME: Building Renovations
 Main Building
 Washington, District of Columbia

SCALE: 1/8" = 1'-0"
 DRAWN BY: JI
 CHECKED BY: HA
 PROJECT NO: 8374.000
 DATE: 11/02/11
 DRAWING NO: E-3

**FIRST FLOOR
 FIRE ALARM PLAN**

DRAWING NOTES:
 1 REFER TO THE FIRE ALARM PANEL REFER TO THE FIELD OF WORK FOR ADDITIONAL INFORMATION.
 2 REFER TO THE FIRE ALARM SYSTEM WORKER PANEL REFER TO DRAWING FOR ADDITIONAL INFORMATION.



1 FIRST FLOOR FIRE ALARM PLAN
 (SEE 1/8" = 1'-0")

NO.	DATE	DESCRIPTION
1	11/22/11	ISSUED FOR BID
2		
3		
4		
5		
6		
7		
8		
9		
10		

Building Renovations
Organization of American States
 Main Building
 Washington, District of Columbia

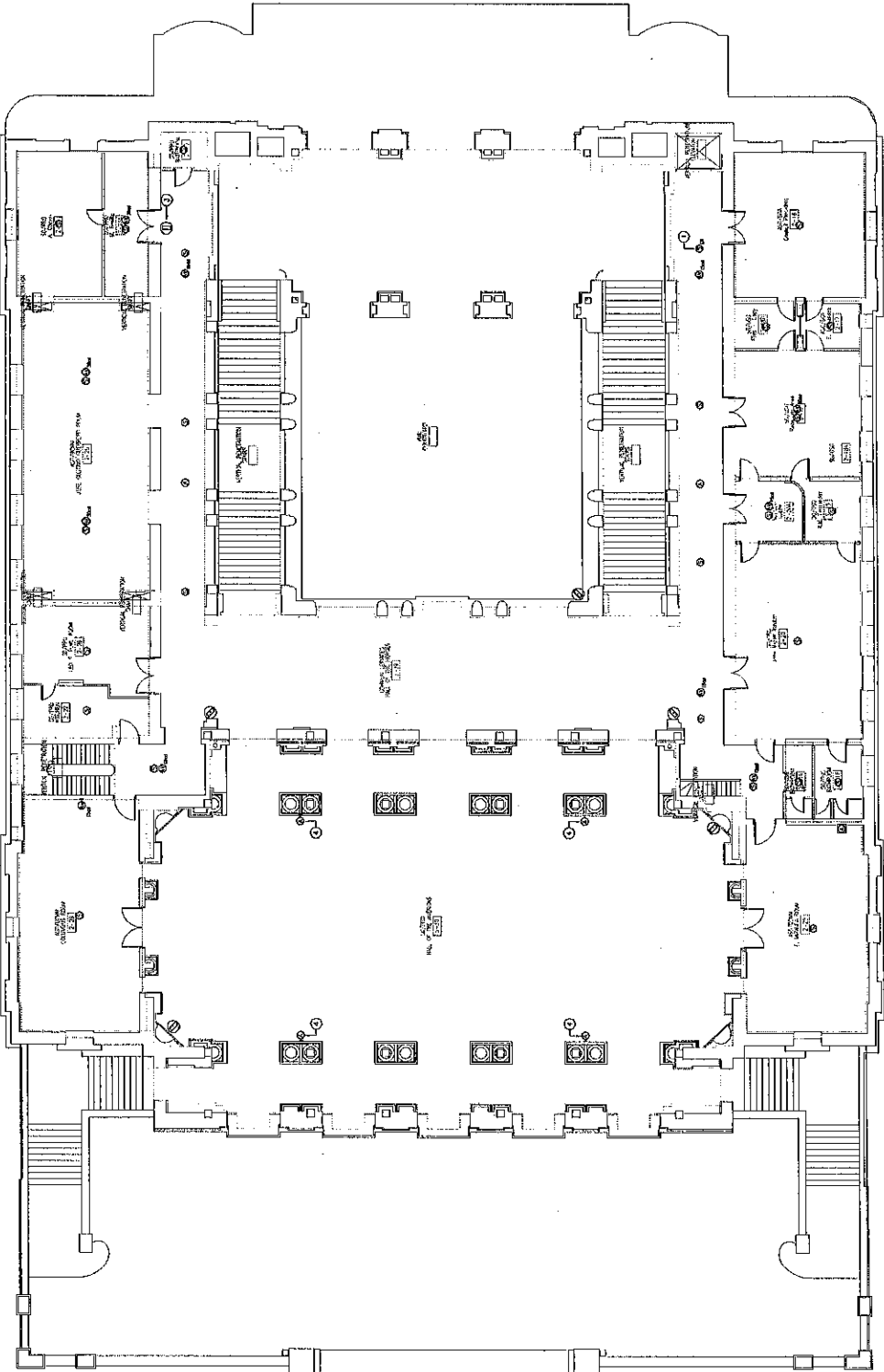
PROJECT NAME
 STAMP

TITLE
**SECOND FLOOR
 FIRE ALARM PLAN**

SCALE: 1/8" = 1'-0"
 DRAWN BY: JJ
 CHECKED BY: JA
 PROJECT NO.: 5314-000
 DATE: 11/22/11
 DRAWING NO.

E-4

- DRAWING NOTES:**
- 1. EXISTING SMOKE DETECTOR SHALL BE REMOVED AND CONNECTED TO NEW BUILDING FIRE ALARM SYSTEM.
 - 2. MOUNT CAMERA AT LODGE.
 - 3. MOUNT ABOVE EXISTING DECORATIVE ARCHES.
 - 4. MOUNT CONCEALED IN ONE.

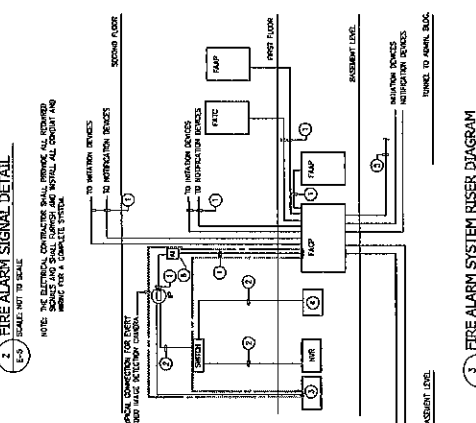
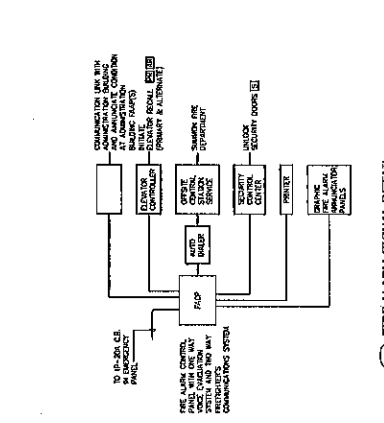


1. SECOND FLOOR FIRE ALARM PLAN
 2. SCALE: 1/8" = 1'-0"

No.	Date	Description
1	11/26/71	OWNER REVIEW
2	11/27/71	ISSUED FOR BID

SCALE
 NOT TO SCALE

DATE
 11/22/71



DETAIL NOTES:

- 1 WIRE AND CABLE AS RECOMMENDED BY THE ALARM SYSTEM MANUFACTURER
- 2 PROVIDE FUSED AND GATED LINE FOR CHANGES CONNECTION FOR THE ALARM SYSTEM
- 3 WIRE AND CABLE AS RECOMMENDED BY THE ALARM SYSTEM MANUFACTURER
- 4 PROVIDE FUSED AND GATED LINE FOR CHANGES CONNECTION FOR THE ALARM SYSTEM
- 5 WIRE AND CABLE AS RECOMMENDED BY THE ALARM SYSTEM MANUFACTURER
- 6 PROVIDE FUSED AND GATED LINE FOR CHANGES CONNECTION FOR THE ALARM SYSTEM
- 7 WIRE AND CABLE AS RECOMMENDED BY THE ALARM SYSTEM MANUFACTURER
- 8 PROVIDE FUSED AND GATED LINE FOR CHANGES CONNECTION FOR THE ALARM SYSTEM
- 9 WIRE AND CABLE AS RECOMMENDED BY THE ALARM SYSTEM MANUFACTURER
- 10 PROVIDE FUSED AND GATED LINE FOR CHANGES CONNECTION FOR THE ALARM SYSTEM

FIRE ALARM SEQUENCE OF OPERATIONS:

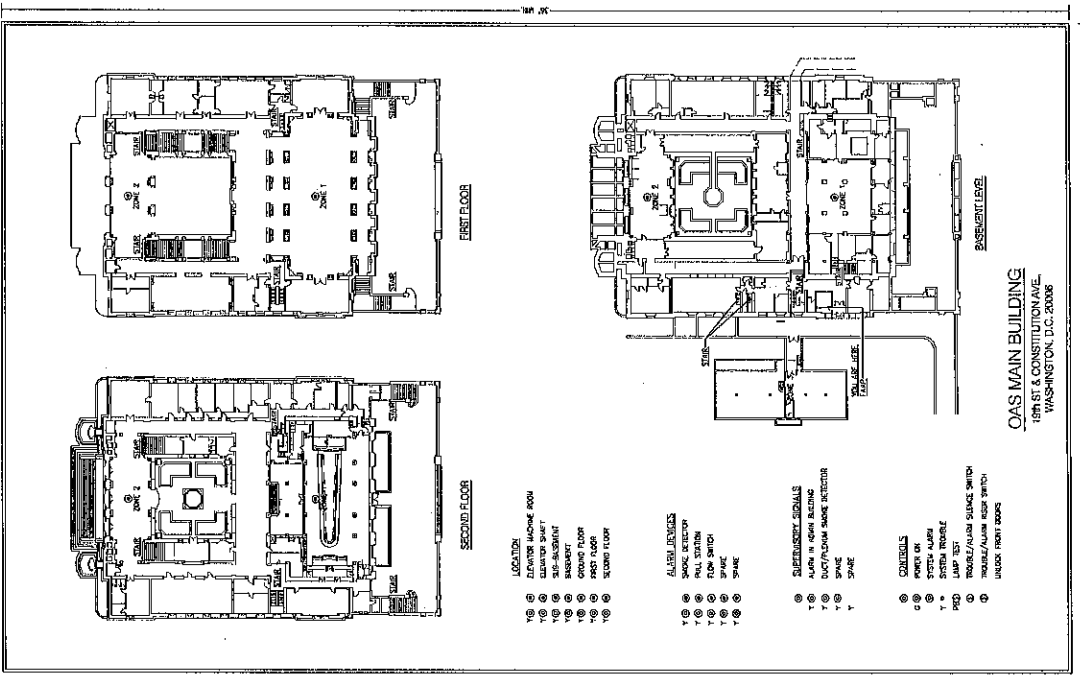
1. IN THE NORMAL CONDITION:
 - A. THE NORMAL LED (GREEN) ON THE FIRE ALARM CONTROL PANEL, FLASHES (ON/OFF) AT 1/2 SECOND INTERVALS.
 - B. THE POWER ON LED (GREEN) IS ILLUMINATED ON THE GRAPHIC SIGNAL PANEL.
 - C. THE OPERATION OF A MANUAL STATION OR THE ACTIVATION OF A SMOKE FLOOR SWITCH, INTERMIX ROOM, OR (AREA) SMOKE DETECTOR WILL:
 - A. EXTINGUISH THE NORMAL LED (GREEN), ILLUMINATE THE ALARM LED (RED), AND FLASH THE BUILDING ON THE FIRE ALARM CONTROL PANEL.
 - B. FLASH ALL VISUAL ALERTING DEVICES ON ALL FLOORS, LEVEL, RESET, AND RE-ARM THE SYSTEM.
 - C. FLASH ALL VISUAL ALERTING DEVICES ON THE MAIN BUILDING FIRE ALARM CONTROL PANEL.
 - D. FLASH ALL VISUAL ALERTING DEVICES ON THE ANNUNCIATOR PANELS.
 - E. FLASH ALL VISUAL ALERTING DEVICES ON THE COMMUNICATIONS PANELS.
 - F. FLASH ALL VISUAL ALERTING DEVICES ON THE COMMUNICATIONS PANELS.
 - G. FLASH ALL VISUAL ALERTING DEVICES ON THE COMMUNICATIONS PANELS.
 - H. FLASH ALL VISUAL ALERTING DEVICES ON THE COMMUNICATIONS PANELS.
 - I. FLASH ALL VISUAL ALERTING DEVICES ON THE COMMUNICATIONS PANELS.
 - J. FLASH ALL VISUAL ALERTING DEVICES ON THE COMMUNICATIONS PANELS.
 - K. FLASH ALL VISUAL ALERTING DEVICES ON THE COMMUNICATIONS PANELS.
 - L. FLASH ALL VISUAL ALERTING DEVICES ON THE COMMUNICATIONS PANELS.
 - M. FLASH ALL VISUAL ALERTING DEVICES ON THE COMMUNICATIONS PANELS.
 - N. FLASH ALL VISUAL ALERTING DEVICES ON THE COMMUNICATIONS PANELS.
 - O. FLASH ALL VISUAL ALERTING DEVICES ON THE COMMUNICATIONS PANELS.
 - P. FLASH ALL VISUAL ALERTING DEVICES ON THE COMMUNICATIONS PANELS.
 - Q. FLASH ALL VISUAL ALERTING DEVICES ON THE COMMUNICATIONS PANELS.
 - R. FLASH ALL VISUAL ALERTING DEVICES ON THE COMMUNICATIONS PANELS.
 - S. FLASH ALL VISUAL ALERTING DEVICES ON THE COMMUNICATIONS PANELS.
 - T. FLASH ALL VISUAL ALERTING DEVICES ON THE COMMUNICATIONS PANELS.
 - U. FLASH ALL VISUAL ALERTING DEVICES ON THE COMMUNICATIONS PANELS.
 - V. FLASH ALL VISUAL ALERTING DEVICES ON THE COMMUNICATIONS PANELS.
 - W. FLASH ALL VISUAL ALERTING DEVICES ON THE COMMUNICATIONS PANELS.
 - X. FLASH ALL VISUAL ALERTING DEVICES ON THE COMMUNICATIONS PANELS.
 - Y. FLASH ALL VISUAL ALERTING DEVICES ON THE COMMUNICATIONS PANELS.
 - Z. FLASH ALL VISUAL ALERTING DEVICES ON THE COMMUNICATIONS PANELS.

FIRE ALARM SEQUENCE OF OPERATIONS (CONTINUED):

2. THE ACTIVATION OF A MANUAL STATION OR SMOKE FLOOR SWITCH, INTERMIX ROOM, OR (AREA) SMOKE DETECTOR WILL:
 - A. EXTINGUISH THE NORMAL LED (GREEN), ILLUMINATE THE ALARM LED (RED), AND FLASH THE BUILDING ON THE FIRE ALARM CONTROL PANEL.
 - B. FLASH ALL VISUAL ALERTING DEVICES ON ALL FLOORS, LEVEL, RESET, AND RE-ARM THE SYSTEM.
 - C. FLASH ALL VISUAL ALERTING DEVICES ON THE MAIN BUILDING FIRE ALARM CONTROL PANEL.
 - D. FLASH ALL VISUAL ALERTING DEVICES ON THE ANNUNCIATOR PANELS.
 - E. FLASH ALL VISUAL ALERTING DEVICES ON THE COMMUNICATIONS PANELS.
 - F. FLASH ALL VISUAL ALERTING DEVICES ON THE COMMUNICATIONS PANELS.
 - G. FLASH ALL VISUAL ALERTING DEVICES ON THE COMMUNICATIONS PANELS.
 - H. FLASH ALL VISUAL ALERTING DEVICES ON THE COMMUNICATIONS PANELS.
 - I. FLASH ALL VISUAL ALERTING DEVICES ON THE COMMUNICATIONS PANELS.
 - J. FLASH ALL VISUAL ALERTING DEVICES ON THE COMMUNICATIONS PANELS.
 - K. FLASH ALL VISUAL ALERTING DEVICES ON THE COMMUNICATIONS PANELS.
 - L. FLASH ALL VISUAL ALERTING DEVICES ON THE COMMUNICATIONS PANELS.
 - M. FLASH ALL VISUAL ALERTING DEVICES ON THE COMMUNICATIONS PANELS.
 - N. FLASH ALL VISUAL ALERTING DEVICES ON THE COMMUNICATIONS PANELS.
 - O. FLASH ALL VISUAL ALERTING DEVICES ON THE COMMUNICATIONS PANELS.
 - P. FLASH ALL VISUAL ALERTING DEVICES ON THE COMMUNICATIONS PANELS.
 - Q. FLASH ALL VISUAL ALERTING DEVICES ON THE COMMUNICATIONS PANELS.
 - R. FLASH ALL VISUAL ALERTING DEVICES ON THE COMMUNICATIONS PANELS.
 - S. FLASH ALL VISUAL ALERTING DEVICES ON THE COMMUNICATIONS PANELS.
 - T. FLASH ALL VISUAL ALERTING DEVICES ON THE COMMUNICATIONS PANELS.
 - U. FLASH ALL VISUAL ALERTING DEVICES ON THE COMMUNICATIONS PANELS.
 - V. FLASH ALL VISUAL ALERTING DEVICES ON THE COMMUNICATIONS PANELS.
 - W. FLASH ALL VISUAL ALERTING DEVICES ON THE COMMUNICATIONS PANELS.
 - X. FLASH ALL VISUAL ALERTING DEVICES ON THE COMMUNICATIONS PANELS.
 - Y. FLASH ALL VISUAL ALERTING DEVICES ON THE COMMUNICATIONS PANELS.
 - Z. FLASH ALL VISUAL ALERTING DEVICES ON THE COMMUNICATIONS PANELS.

FIRE ALARM SEQUENCE OF OPERATIONS (CONTINUED):

3. THE ACTIVATION OF A MANUAL STATION OR SMOKE FLOOR SWITCH, INTERMIX ROOM, OR (AREA) SMOKE DETECTOR WILL:
 - A. EXTINGUISH THE NORMAL LED (GREEN), ILLUMINATE THE ALARM LED (RED), AND FLASH THE BUILDING ON THE FIRE ALARM CONTROL PANEL.
 - B. FLASH ALL VISUAL ALERTING DEVICES ON ALL FLOORS, LEVEL, RESET, AND RE-ARM THE SYSTEM.
 - C. FLASH ALL VISUAL ALERTING DEVICES ON THE MAIN BUILDING FIRE ALARM CONTROL PANEL.
 - D. FLASH ALL VISUAL ALERTING DEVICES ON THE ANNUNCIATOR PANELS.
 - E. FLASH ALL VISUAL ALERTING DEVICES ON THE COMMUNICATIONS PANELS.
 - F. FLASH ALL VISUAL ALERTING DEVICES ON THE COMMUNICATIONS PANELS.
 - G. FLASH ALL VISUAL ALERTING DEVICES ON THE COMMUNICATIONS PANELS.
 - H. FLASH ALL VISUAL ALERTING DEVICES ON THE COMMUNICATIONS PANELS.
 - I. FLASH ALL VISUAL ALERTING DEVICES ON THE COMMUNICATIONS PANELS.
 - J. FLASH ALL VISUAL ALERTING DEVICES ON THE COMMUNICATIONS PANELS.
 - K. FLASH ALL VISUAL ALERTING DEVICES ON THE COMMUNICATIONS PANELS.
 - L. FLASH ALL VISUAL ALERTING DEVICES ON THE COMMUNICATIONS PANELS.
 - M. FLASH ALL VISUAL ALERTING DEVICES ON THE COMMUNICATIONS PANELS.
 - N. FLASH ALL VISUAL ALERTING DEVICES ON THE COMMUNICATIONS PANELS.
 - O. FLASH ALL VISUAL ALERTING DEVICES ON THE COMMUNICATIONS PANELS.
 - P. FLASH ALL VISUAL ALERTING DEVICES ON THE COMMUNICATIONS PANELS.
 - Q. FLASH ALL VISUAL ALERTING DEVICES ON THE COMMUNICATIONS PANELS.
 - R. FLASH ALL VISUAL ALERTING DEVICES ON THE COMMUNICATIONS PANELS.
 - S. FLASH ALL VISUAL ALERTING DEVICES ON THE COMMUNICATIONS PANELS.
 - T. FLASH ALL VISUAL ALERTING DEVICES ON THE COMMUNICATIONS PANELS.
 - U. FLASH ALL VISUAL ALERTING DEVICES ON THE COMMUNICATIONS PANELS.
 - V. FLASH ALL VISUAL ALERTING DEVICES ON THE COMMUNICATIONS PANELS.
 - W. FLASH ALL VISUAL ALERTING DEVICES ON THE COMMUNICATIONS PANELS.
 - X. FLASH ALL VISUAL ALERTING DEVICES ON THE COMMUNICATIONS PANELS.
 - Y. FLASH ALL VISUAL ALERTING DEVICES ON THE COMMUNICATIONS PANELS.
 - Z. FLASH ALL VISUAL ALERTING DEVICES ON THE COMMUNICATIONS PANELS.



LOCATION:

- Y (Red Lamp) ELEVATOR MACHINE ROOM
- Y (Yellow Lamp) SUB-BASMENT
- Y (Green Lamp) BASEMENT
- Y (Red Lamp) GROUND FLOOR
- Y (Yellow Lamp) FIRST FLOOR
- Y (Green Lamp) SECOND FLOOR

ALARM SIGNALS:

- Y (Red Lamp) SMOKE DETECTOR
- Y (Yellow Lamp) PULL STATION
- Y (Green Lamp) FLOOR SWITCH
- Y (Red Lamp) SMOKE

CONTROLS:

- G (Green Lamp) POWER ON
- Y (Yellow Lamp) SYSTEM ALARM
- Y (Green Lamp) LAMP TEST
- Y (Red Lamp) TROUBLE/ALARM SIGNAL SWITCH
- Y (Green Lamp) UNDER FRONT DOORS

