



Roundtable Discussion on enabling activities for implementation of CITES

**Support by the Inter
American Development
Bank**

Ernani Pilla ernanip@iadb.org

CITES –Clusters: Capacity building and Mobilizing resources

IDB's Environment and Safeguards Compliance Policy (July 06)

- 1) Integration of environmental sustainability outcomes and strengthening environmental management capacity in borrowing member countries
- 2) Implement environmentally sound operations – private & public sectors
- 3) Foster Corporate Environmental Responsibility
- Environment and Safeguards Unit (ESG) – multidisciplinary team tasked with delivering on the above objectives.
- **Safeguard Policies** – special emphasis on Natural Habitats and Critical Natural Habitats: biodiversity, environmental goods and services.



CITES –Clusters: Capacity building and Mobilizing resources

- The Bank supports projects which conserve natural habitats and biodiversity, especially within protected areas. These conservation projects are financed by grants (Global Environment Facility-GEF), as well as IDB loans and FSO credits.
- The current IDB-GEF portfolio/pipeline amounts to US\$ 99.2 million (30 projects): grant investments cover Biodiversity (35%), International Waters (31%), Climate Change (28%), and Land degradation (6%).
- Includes support for IDB Regional Public Goods Initiatives (Chaco, Amazon Basin)
- GEF investments are co-financing IDB loans for an approximate amount of US\$ 300 million, contributing to mainstreaming environmental investments in sector development loans.



Environment and Safeguards Compliance Policy (July 2006)

The Bank's Natural Habitats Policy (Policy Directive B.9)

CITES list of species is a categorical exclusion clause for all projects

CITES –Clusters: Best available information

- Project Screening, Classification, Due Diligence/Impact Assessment, Supervision.

POLICY	ALERT ISSUES	YES	NO	?
Resettlement and Indigenous People (B.01)	Potential disruption to people's livelihoods living in the project's area of influence. (not limited to involuntary displacement. Also see Resettlement Policy.)	<input type="radio"/>	<input checked="" type="radio"/>	<input type="radio"/>
	Potential to affect Indigenous People (also see Indigenous Peoples Policy.)	<input type="radio"/>	<input checked="" type="radio"/>	<input type="radio"/>
OP-704 A-2 (B.02)	Activities to be financed in the project area are located within a geographical area or sector exposed to natural hazards (Type 1 Disaster Risk Scenario).	<input type="radio"/>	<input checked="" type="radio"/>	<input type="radio"/>
	The operation itself has a potential to exacerbate hazard risk to human life, property, the environment or the operation itself (Type 2 Disaster Risk Scenario).	<input type="radio"/>	<input checked="" type="radio"/>	<input type="radio"/>
	Potential for impacts that are out of compliance with environmental laws and regulations of the country where the operation is being implemented.	<input type="radio"/>	<input checked="" type="radio"/>	<input type="radio"/>
(B.04)	The operation involves more than one country and/or may trigger a Multi-lateral Environmental Agreement (e.g. CITES).	<input type="radio"/>	<input checked="" type="radio"/>	<input type="radio"/>
	There are Associated Facilities (see Policy definition) relating to the investments being financed by the Bank.	<input type="radio"/>	<input checked="" type="radio"/>	<input type="radio"/>
(B.05)	The Borrower/Executing Agency exhibits weak institutional capacity for managing environmental and social issues.	<input type="radio"/>	<input checked="" type="radio"/>	<input type="radio"/>
	A lack of commitment from the client with regard to the implementation of environmental and social mitigation and compensation measures.	<input type="radio"/>	<input checked="" type="radio"/>	<input type="radio"/>
	Environmental or Social liabilities of the project and/or other projects or nearby sites.	<input type="radio"/>	<input checked="" type="radio"/>	<input type="radio"/>
	Other environmental and social sustainability issues that the Project Team considers to be a risk for this operation. (e.g. wood sourced from Amazon rainforest).	<input type="radio"/>	<input checked="" type="radio"/>	<input type="radio"/>
(B.06)	If a Technical Cooperation, the operation is associated with the design and/or implementation of a major investment loan in infrastructure.	<input type="radio"/>	<input checked="" type="radio"/>	<input type="radio"/>
	An Environmental Assessment is going to be performed.	<input type="radio"/>	<input checked="" type="radio"/>	<input type="radio"/>
(B.06)	Consultations will be performed.	<input type="radio"/>	<input checked="" type="radio"/>	<input type="radio"/>

<https://idb.sfn.net.com/>



At the same time, the Natural Habitats Policy ensures that IDB supported projects do not cause excessive or unjustified damage to natural habitats.

CITES –Clusters: Best available information & Establishing cooperation and synergies with other organizations

→Developing Refined Decision Support Tools for IDB:

- Provides IDB efficient access to environmental and conservation methods, data, tools and services
- Aggregated information regarding conservation priorities across broad geographic areas
- Data: Species – IBAs, KBAs, AZEs; hotspots, terrestrial + freshwater ecosystems, other conservation priorities



IDB-DSS - Windows Internet Explorer

http://birdss3.wri.net/bat/home.php

File Edit View Favorites Tools Help


Links CyberDOCS Employee Lookup IADB-IC Directory IDB Forms IDB WebMail IDB-ICC Credit Union OPS Portal OPLUS Oxford English Dictionary Web Training ICC HelpDesk gndPRIS Menu

Go Translate TV Employees Games Chinese Course Gin Runny Lottery Sela! E-mail notifier

Enter-american Development... IDB-DSS IDB-DSS

IDB Inter-American Development Bank

You are logged in as idb-dss [Logout](#)



Interactive Mapping

Use the interactive mapping tool to find areas of interest and explore data on species, sites, and ecosystems.

Hotspots

Jump to a summary of hotspots, critical sites for biodiversity and ecosystems for each country or territory.

Latest News

- ▶ IUCN Red List 2007
- ▶ KBA seeding data - September 2008
- ▶ WIPA 2008

[View More](#)

Quick Navigation

Latitude Longitude [Go](#)

Country/Territory [Go](#)







Learn More About
The IDB-DSS [Go](#)

Learn More About
Data Behind IDB-DSS [Go](#)

Learn More About
IDB-DSS Partners [Go](#)

Learn How To
Contact Us [Go](#)

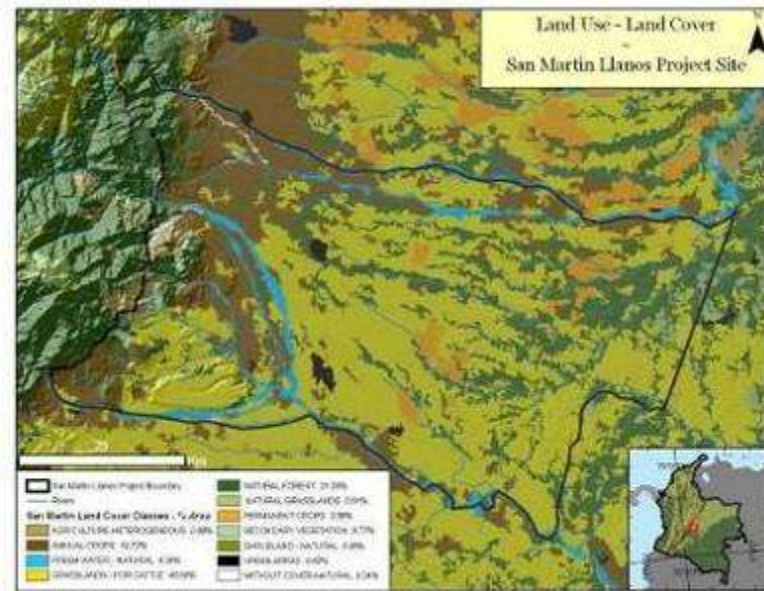
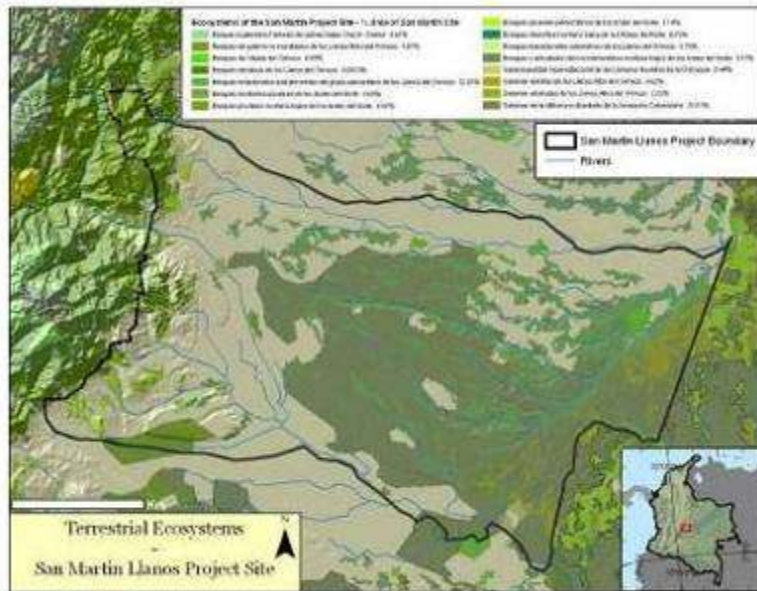
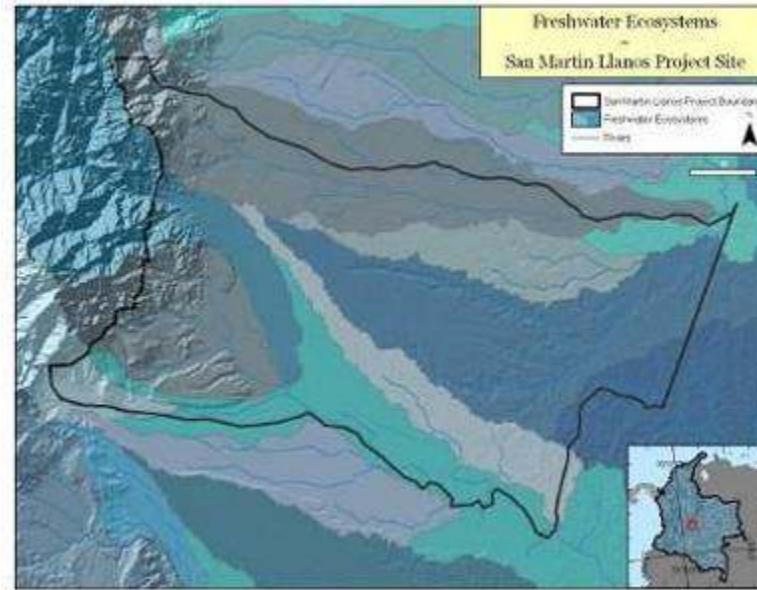
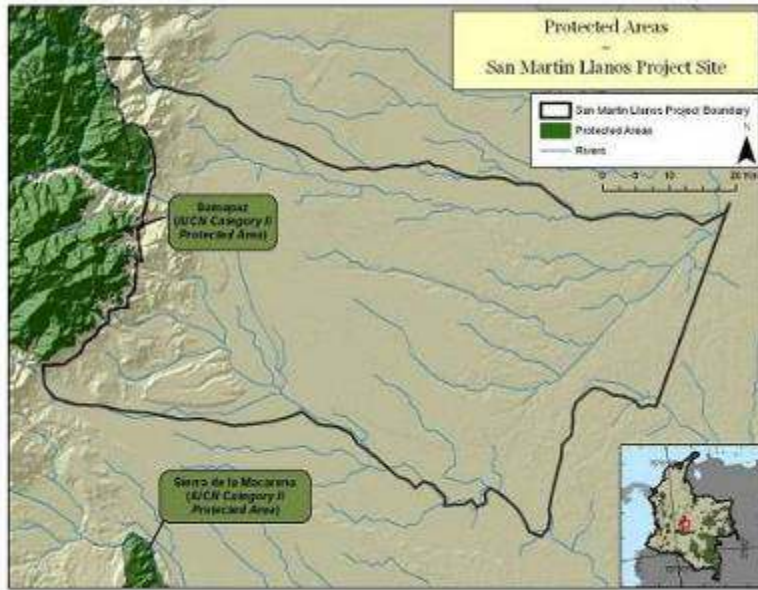
© 2008 IDB. All Rights Reserved.

IDB-DSS



Example of Agrisilviculture Project in Colombia



CITES –Clusters: Best available information & Establishing cooperation and synergies with other organizations

Future project: toolbox

- Representation of Potential Project Impact
 - Direct Impacts: Buffering Tools
 - Secondary Impacts: Modeling Tools
- Cumulative Impact Assessment
- Mitigation, Offset and Compensation Analyses
- Corridor Analyses
 - Migratory Species Corridors
 - Ecological Connectivity
 - Accommodation of Climate Change
- Development of Alternative Development Scenarios
- Mapping and Integration of Ecosystem Service Values
- Open Data Sharing with Client Countries and Partners



Thank you!

Inter-American Development Bank / www.iadb.org