



Governance in the Water Sector

Karin M. Krchnak, kkrchnak@tnc.org



Governance

Governance covers the manner in which power is balanced in the administration of a country and embraces the traditions and institutions by which authority is exercised.



Governance Systems

- **Hierarchical governance** - how the state steers society
- **Market-led governance** - how the market allocates resources
- **Distributed or contemporary governance** - how society co-ordinates and manages itself



Water Governance

Water Governance refers to the range of political, social, economic and administrative systems that are in place to develop and manage water resources and the delivery of water services at different levels of society.



Pollution

Inefficient Water Use

Poor Productivity of Water

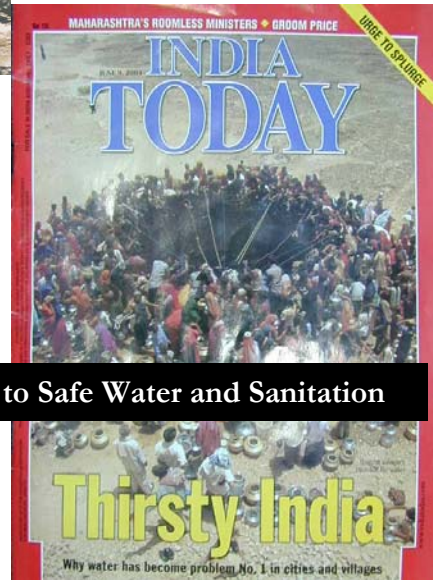
Public Health Problems

Weeds

Degraded Lands



Poor Access to Safe Water and Sanitation



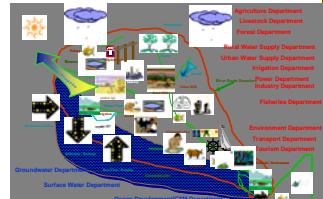
High Costs, Low Prices/ Collection, O&M, Competing Demands, Financing Gaps

Natural Disasters



Dilapidated Infrastructure

Need for asset modernization/development



Weak Institutions for Resource Management and Service Delivery

Poor Knowledge Base/Analysis Often Bloated, Inefficient Bureaucracies





How We Make Decisions



Access to Information

Access to Participation

Access to Justice

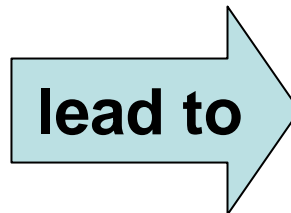




Why is Information and Participation Needed in Decisions?

Processes that provide:

- Access to Information
- Participation in Decisions
- Mechanisms for Accountability



Decisions that are more likely to be:

- Equitable
- Environmentally Sustainable
- Actually Implemented



Sample Role of NGOs

- Planning (national, regional, local)
- Advocacy
- Project Development & Management
- Facilitator/Convener
- Training
- Monitoring
- Awareness raising/community education



Types of Local NGO Watershed Activities

- Land acquisition & legal tenure
- Patrols of protected areas
- Erosion control & riparian area protection
- Water source protection
- Formation of watershed committees
- Environmental education
- Promotion of BMPs for agriculture
- Community development
- Monitoring & evaluation of project results



IWRM and the 3Es

- IWRM is about water governance and getting the right balance between the 3Es: environmental growth, social equity and environmental sustainability.
- Social and Environment = long term problems, politics and economics = short term solutions. Problem for governance systems
- IWRM is process oriented, location specific, not prescriptive
- Need sequencing, take partial steps, face political reality
- Avoid fear of complexity – need IWRM and infrastructure.

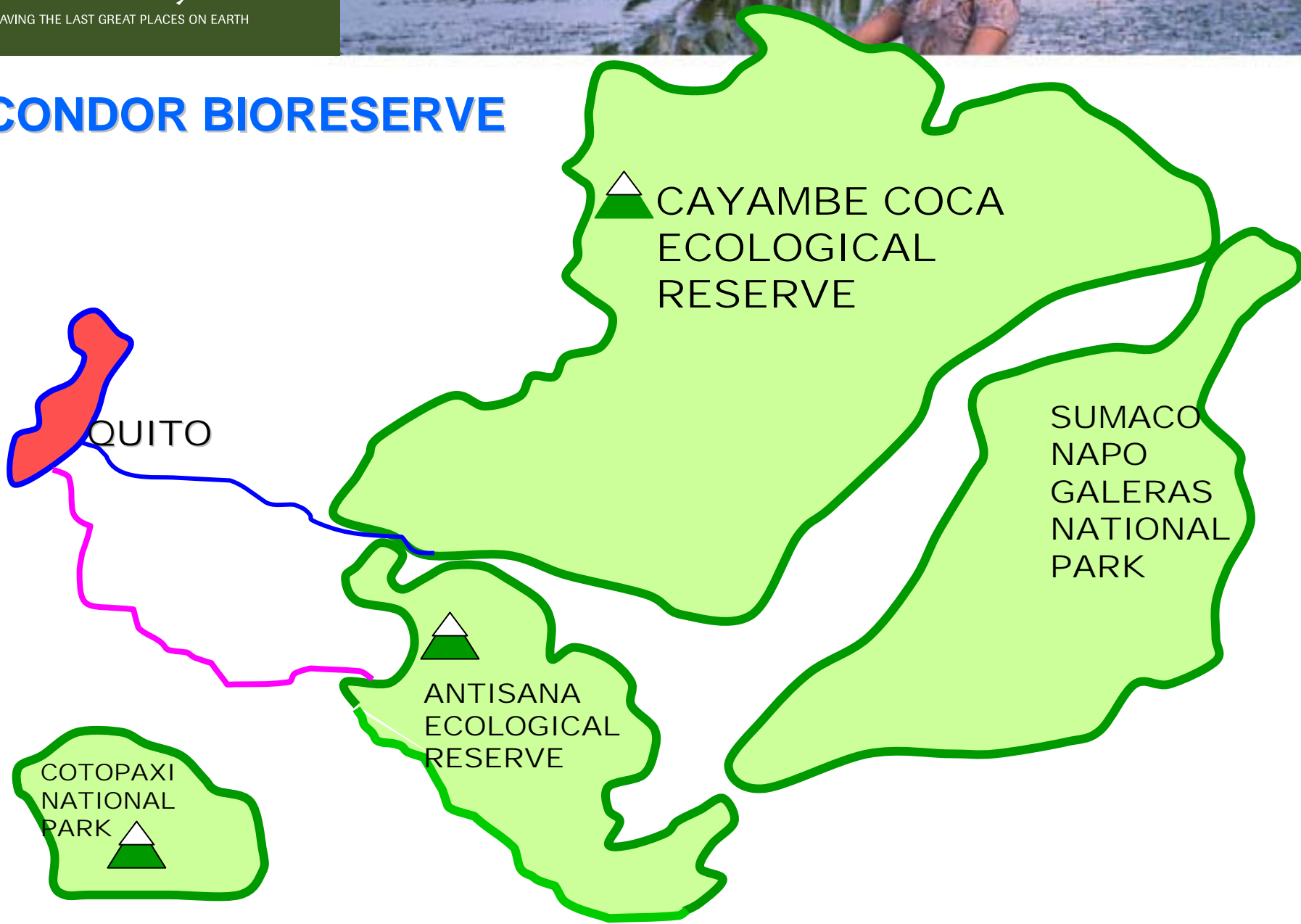


NGO Support of IWRM Planning Processes

- EL Salvador: Support to reform of institutional framework as a precondition for the development of a national IWRM plan.
- Indonesia: Building on the new water law. Support for the development of basin management.
- Southern Africa: Facilitate and coordinate the processes.
- Eastern Africa: Help establishment of inter-linkages political entities, such as Nile Basin Initiative and AMCOW.



CONDOR BIORESERVE



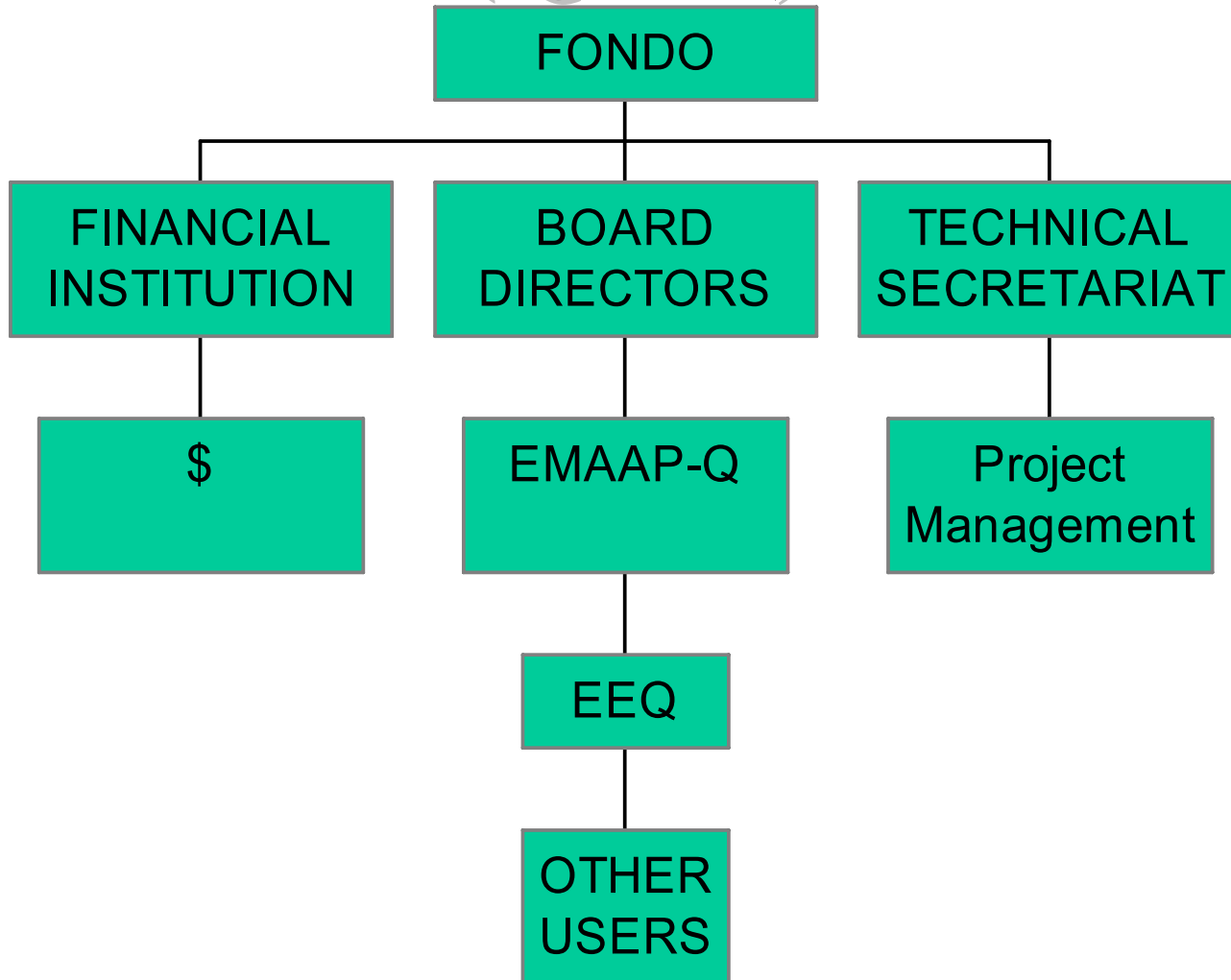


Threats & Impacts

- Threats
 - Advance of the agricultural frontier
 - Inappropriate agricultural practices
 - Poorly planned infrastructure projects
 - Projected population growth – double by 2025
- Impacts
 - Decrease in dry season flow
 - Reduced water quality
 - Planned withdrawal of waters from 28 rivers in Amazon Basin



FONAG (Quito, Ecuador)





FONAG

	2005	2006 Estimated
Equity	\$3,335,000	\$4,000,000
Accumulated Interest	\$398,000	\$400,000

Estimates by Pablo Floret



Challenges: City Ordinance

- Creating culture of integrated watershed management
- Building sense of shared ownership
- Strengthening capacity of FONAG & institutionalizing structure
- Managing expectations
- Educating the public
- Lack of monitoring data on flows and quality



Improving Governance— Ecosystem Security

- Establish inter-ministerial committees on ecosystem security
- Build governmental networks around ecosystem issues
- Reviewing and modify enabling frameworks to facilitate integrated resource management
- Strengthening monitoring and enforcement systems.



Challenges & Opportunities

- Processes require long-term commitment, consistent leadership and funding (POLITICAL WILL KEY)
- There is no single method or approach to water governance and no ‘quick fix’
- Inter-institutional collaboration necessary
- Political administrations change—seek longer term solutions
- Participation and consultation essential for social cohesion
- Major water users & regulators key to involve
- Governments and municipalities must take into account wider governance issues – e.g. international agreements
- Scientific studies essential to build consensus



What is Gender?

Refers to the roles and responsibilities of women and men and the relationship between them in a given culture or location.



Gender Mainstreaming

The process of determining the implications *for women and men* of any planned action, including *legislation, policies and programmes* in all areas and at all levels. I

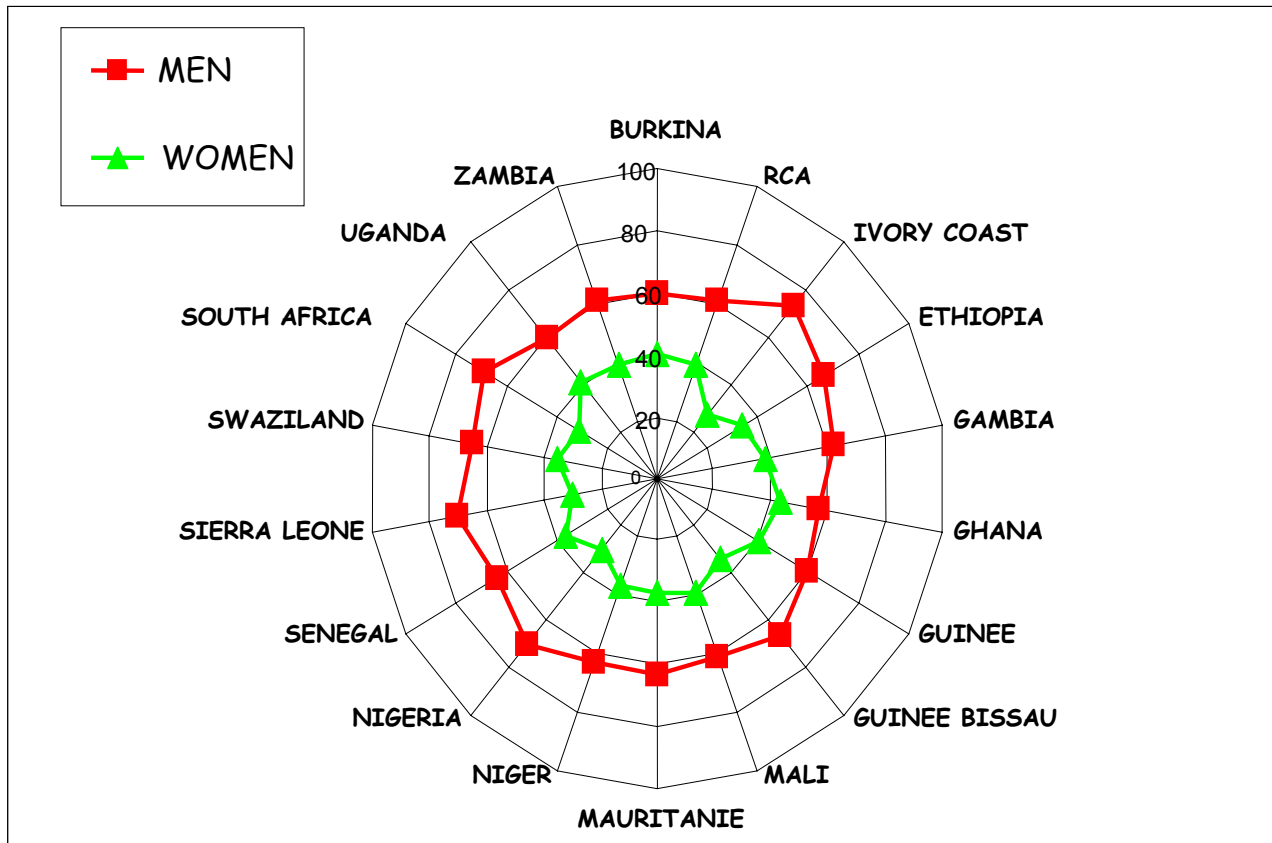


Characteristics of Gender

- Relational → Socially Constructed
- Hierarchical → Power Relations
- Changes: → Changes over time
- Context: → Varies with ethnicity, class, culture, age.
- Institutionally structured → Besides the relations at personal and private level, it also refers to a social system that is supported by values, legislation, religion.



Differences in Revenues in Households



Source: Blackden et Bhanu, "Gender, growth and poverty reduction in Sub-Saharan Africa" World Bank, 1999.



Poverty, Gender and Infrastructure

Poor women are particularly affected by:

- Inappropriate technology
- Inappropriate regulatory standards
- Lack of property rights
- Difficult or lack of access to credit
- Subsidies targeted to the better off
- Unsuitable maintenance & management systems



Gender & Irrigation

- Women grow most of the family food but rarely control the land it is grown on. Less than 2% of all land is owned by women.
- Land tenure systems and customary laws affect women's rights to own –purchase or inherit-, control and use the land.
 - Access to water linked to access to land
 - Impact on food security



Sanitation: A Gender Issue

- Men and women: different levels of privacy required
- Women and girls: face rape, sexual harassment and can develop health problems for constantly restraining themselves
- Unhygienic school sanitation facilities can affect girls' school attendance
- Men and women should be involved in hygiene education and promotion for a real change



Holistic Approach to Water Management

- Impacts on the water sectors affect members of households differently, according to their sex, age and position within the family.
- Different types of users can contribute differently to overall water management.



Challenges & Opportunities

- Facilitate access to credit
- Provide micro-credit and creative alternative financing mechanisms to gender-sensitive organizations
- Change discriminatory laws that prohibit women from getting loans or opening bank accounts
- Improve women's productivity through training, market linkages and access to information
- Support and promote secure and equitable access to land and tenure arrangements that enable female producers to become decision-makers and owners



Thank you!

