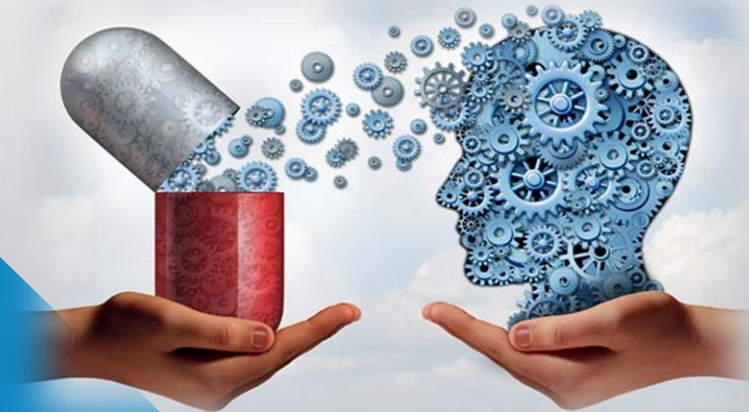


# TREATMENT COORDINATION STATUS REPORT *Guyana*



**Presenters: Ms. Sarita Nanku & Mrs. Joylyn Williams**

**Presentation Date: September 21, 2017**



## *Asked Questions??*

- ❖ How is in-country coordination progressing?
- ❖ What is your experience using the intake form?
- ❖ What is your experience using the Epi-Info data entry software?
- ❖ What are the barriers or challenges you face if any?
- ❖ What are your needs?
- ❖ How is the information from this system disseminated within the country?
- ❖ How do you currently use the information that you are getting from this system?
- ❖ Do you plan to incorporate this data into your annual DIN report?

# ***Progress on Guyana's Coordination***

- ❖ Coordination of the Standardized Treatment Intake Form has been progressing well for Guyana. Currently, the Salvation Army and the Phoenix Recovery Project are the two major treatment facility in Guyana. These two agencies have been performing well and provides up to date data on treatment to the Guyana Drug Information Network bi-annually.
- ❖ Approval was granted from the Chief Medical Officer of the Ministry of Public Health for all health facilities in Guyana to utilize the Standardized treatment form.
- ❖ A re-training will be conducted after this treatment seminar and the Guyana Public Hospital Incorporation will be trained and the forms will be implemented.

# *Experience Using the Intake Form*

- ❖ The Intake form is very straight forward and user friendly.
- ❖ Captures the basic information pertaining to the patient.
- ❖ Helps to garner more information from patients and by doing so we can do added investigations to further help them.

# *Experience Using the Epi-Info Data Entry Software*

- ❖ Epi-Info software is very versatile tool for its users.

# ***Barriers and Challenges Faced***

- ❖ One major challenge faced by treatment centres is the lack of manpower to fill out the forms.
- ❖ For the Salvation Army Rehab centre because of its location drugs are easily accessible.
- ❖ In order to get the Public Hospital to utilize the forms a proposal had to be submitted to the IRB Ministry of Public Health.
- ❖ One centre indicated that filling out the form is a lengthy process.

# ***Needs!!***

- ❖ Refresher training for staff utilizing the form.
- ❖ Need for medical staff at the Salvation Army Rehab Centre.

# *Dissemination of Information*

- ❖ The information is disseminated back to the treatment centres.
- ❖ Through quarterly meetings and reports.





# *Usage of Information*

- To see the trends of drug use and what is new on the market.
- To monitor what age groups are affected the most and how we can work towards prevention.



# ***Incorporation of Data into DIN Report***

- Currently, working on including the data into our Annual Report.



***THANK YOU FOR YOUR  
ATTENTION!***