



OAS | CICAD



UTILIZING EPI-INFO FOR DATA ENTRY AND ANALYSIS

REGIONAL SEMINAR ON DRUG TREATMENT AND DRUG INFORMATION NETWORKS IN THE CARIBBEAN

Tiffany Barry

Project Assistant, Inter-American Observatory on Drugs (OID)

September, 2017

Port of Spain, Trinidad and Tobago

What is Epi-Info

- * Epi- Info is a free statistical software developed by the Center for Disease Control and Prevention (CDC) for public health practitioners and researchers.
- * It provides an easy to develop data entry format and database construction and data analysis tools.
- * The OI-D utilizes Epi-Info 7 for use in the Regional Drug Treatment Data Collection Project
- * More information about epi-info can be found on the CDC website: <https://www.cdc.gov/epiinfo/index.html>

For this presentation we will be doing a step by step walk through on how to use the epi info software:

- * Downloading
- * Uploading the program
- * Entering data
- * Saving and sending the Epi file
- * Using Epi-Info for data analysis
- * Exporting the database

Downloading Epi-Info

* Go to the website: <https://www.cdc.gov/epiinfo/support/downloads.html>

The screenshot shows the Epi Info™ website interface. On the left is a green sidebar with a navigation menu. The main content area has a green header with the Epi Info™ logo. Below the header, there's a breadcrumb trail: CDC > Epi Info™ > Support & Resources. The main heading is "Epi Info™ Downloads" with social media icons for Facebook, Twitter, and a plus sign. A paragraph describes Epi Info™ as a public domain software package for global public health. Below this, the "Epi Info™ For Windows" section is highlighted with a red circle. It features a "Download Version 7.2" heading and two buttons: "Download ZIP File" and "Download Installer". Below the buttons, it shows "Build 7.2.2.1" and "Release Date: 08/21/2017", followed by a note: "*Requires Microsoft Windows XP or higher with Microsoft .NET 4.0." At the bottom, the "Epi Info™ 7 User Guide" section is visible, with a "Full PDF" link expanded to show a "PDF" section containing a link to "Download the Full Epi Info™ User Guide for PDF" (PDF26.2MB) and a note that it's a printable version available for download in PDF format.

Epi Info™

CDC > Epi Info™ > Support & Resources

Epi Info™ Downloads

f t +

Epi Info™ is a public domain software package designed for the global public health community of practitioners and researchers. It provides for easy questionnaire and database construction, data entry and analysis with epidemiologic statistics, graphs, and maps.

Epi Info™ For Windows

Download Version 7.2

Download ZIP File Download Installer

Build 7.2.2.1 Release Date: 08/21/2017

*Requires Microsoft Windows XP or higher with Microsoft .NET 4.0.

Epi Info™ 7 User Guide

> Web

Full PDF

PDF







[Download the Full Epi Info™ User Guide for PDF](#) [PDF26.2MB]:


A printable version of the Full Epi Info™ 7 User Guide, available for download in PDF format.

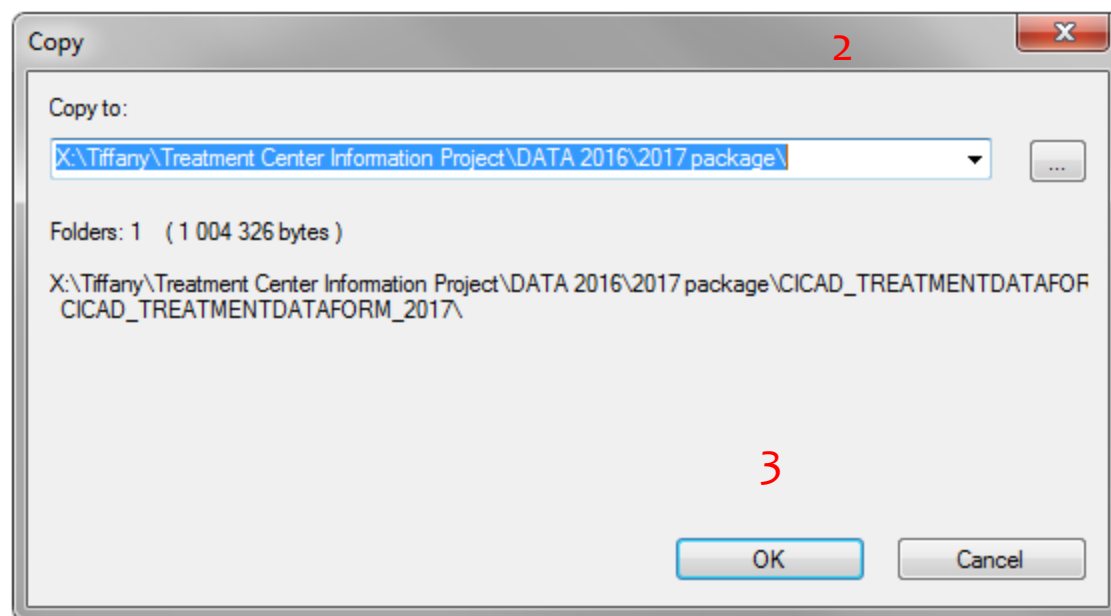
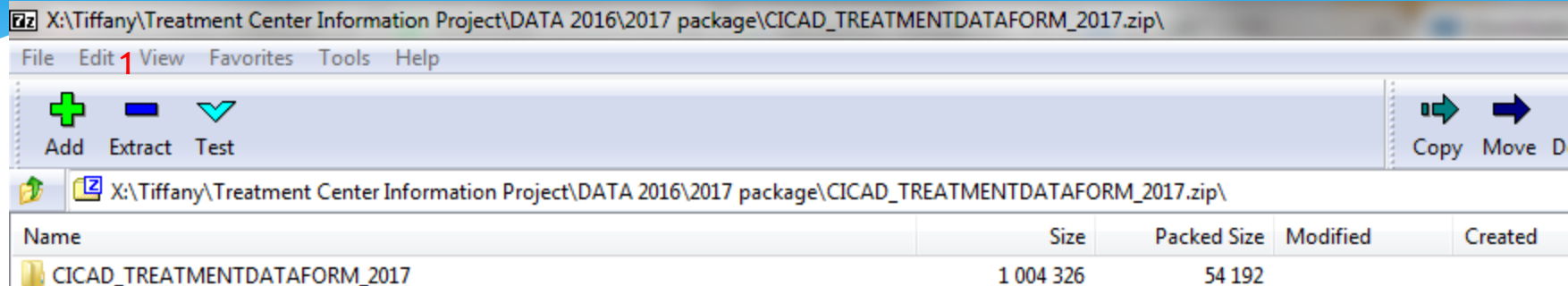
Related Links

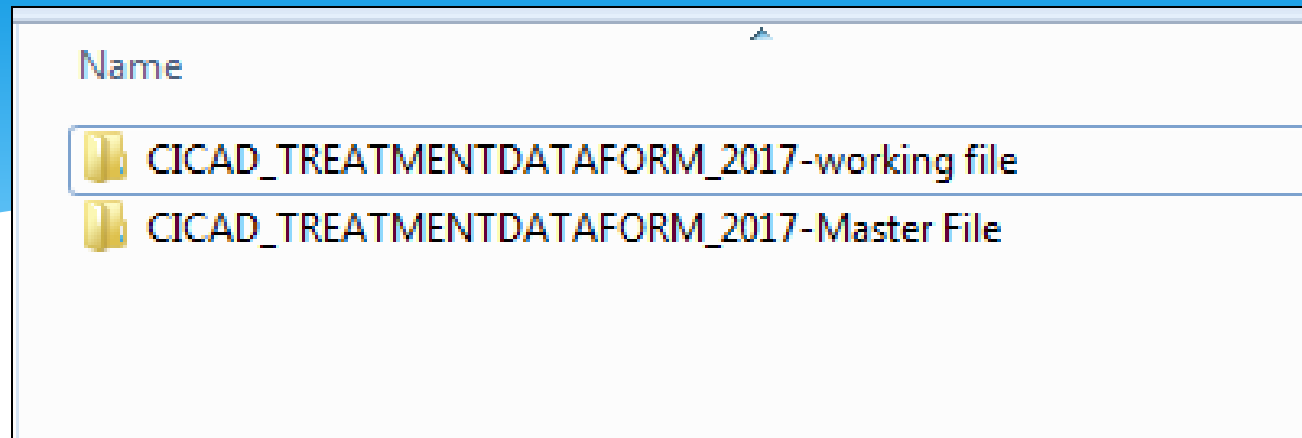
- [Epi Info™ 7 Tutorial Videos](#)
- [Epi Info™ 7 User Guide](#)
- [Epi Info™ Community Questions & Answers](#)

Uploading the program

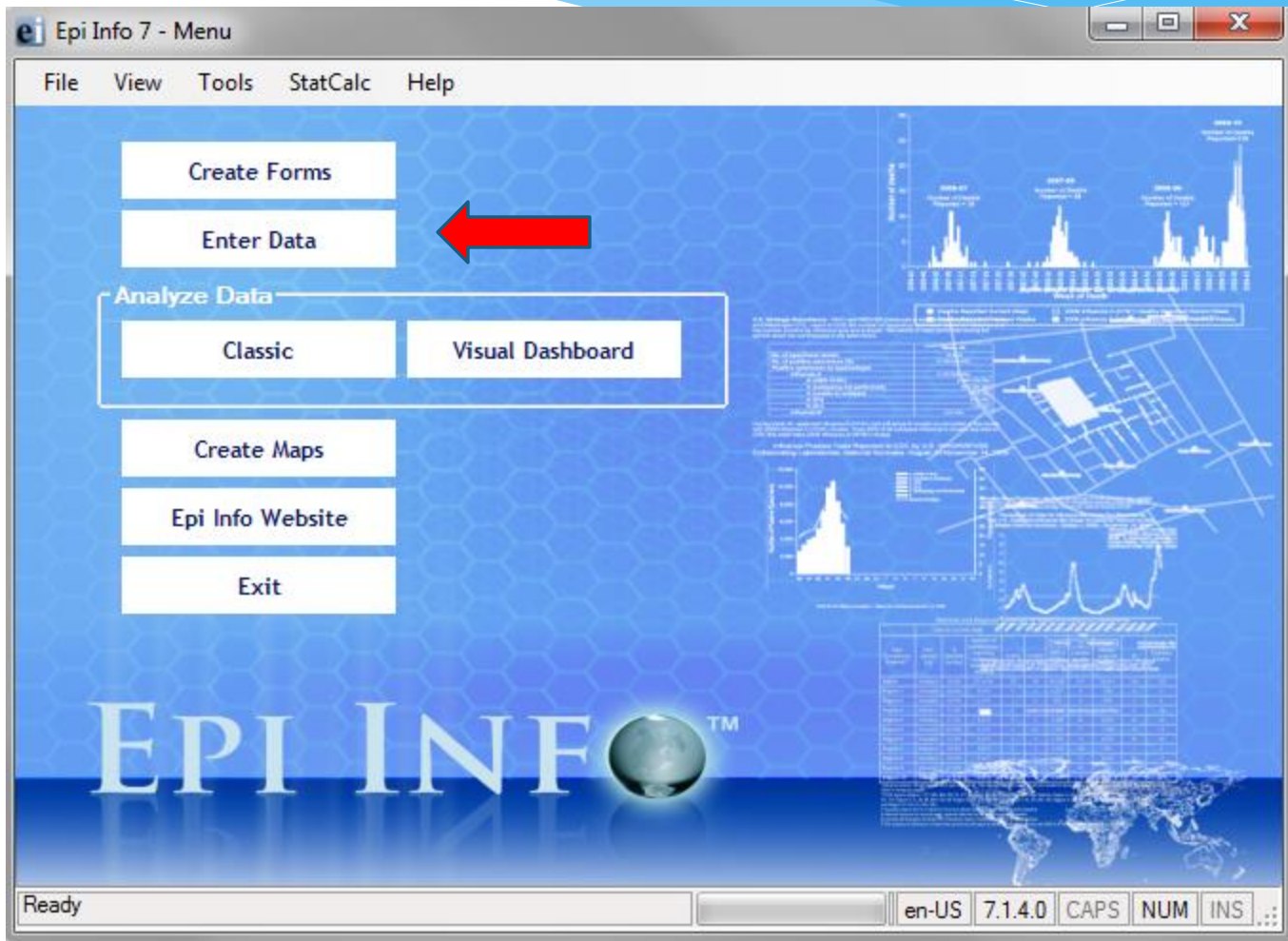
-  CICAD_TREATMENTDATAFORM_2017 
-  Instructions for saving and emailing Epi database
-  Instructions For Treatment Center Intake Form rev Dec 13 2016
-  STANDARD DRUG TREATMENT REGISTRATION FORM-REV JAN 2017
-  STANDARD DRUG TREATMENT REGISTRATION FORM-REV JAN 2017

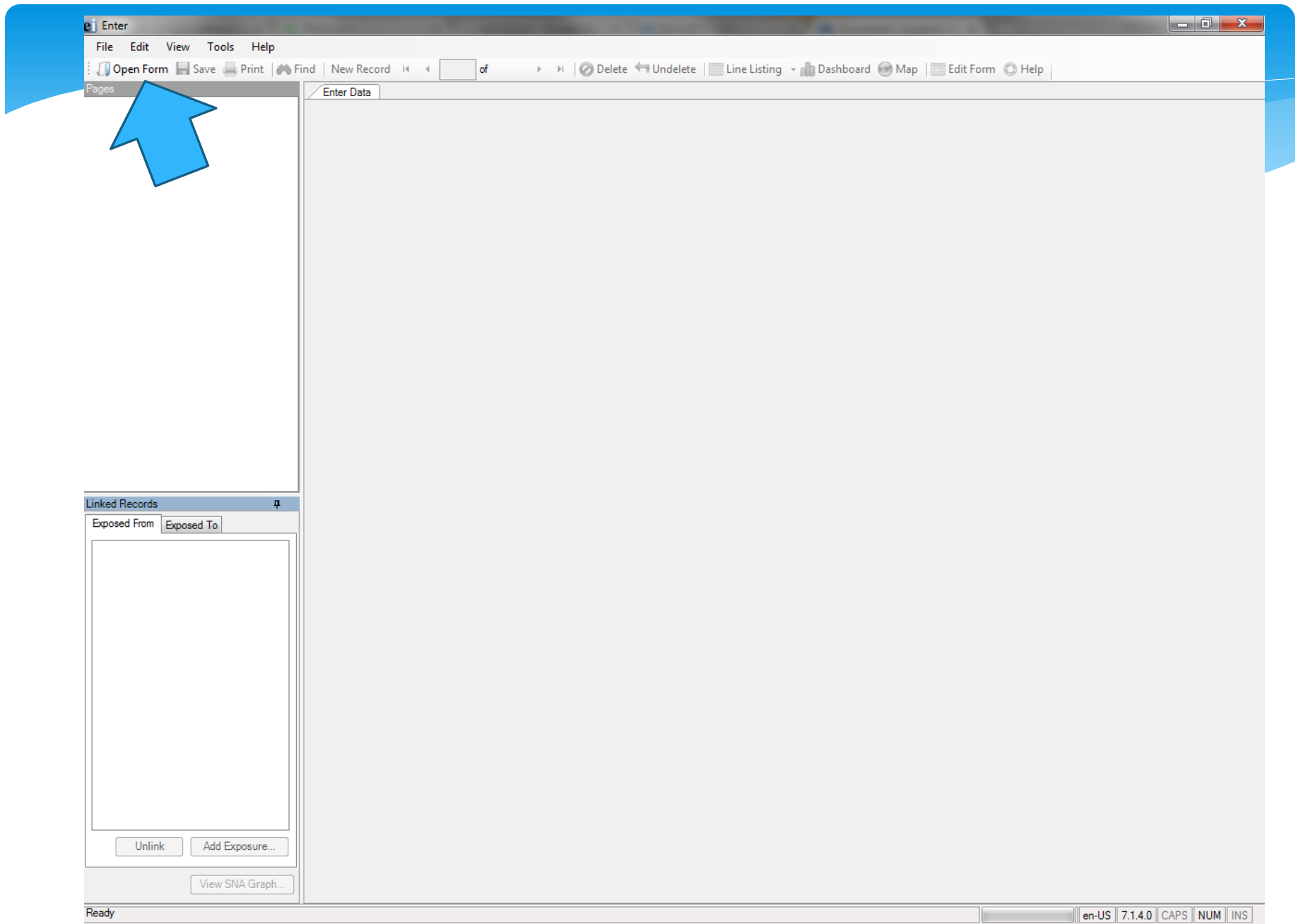
Name	Date modified	Type
 CICAD_TREATMENTDATAFORM_2017	12/13/2016 2:06 PM	Microsoft Access
 CICAD_TREATMENTDATAFORM_2017.prj	12/13/2016 2:04 PM	PRJ File

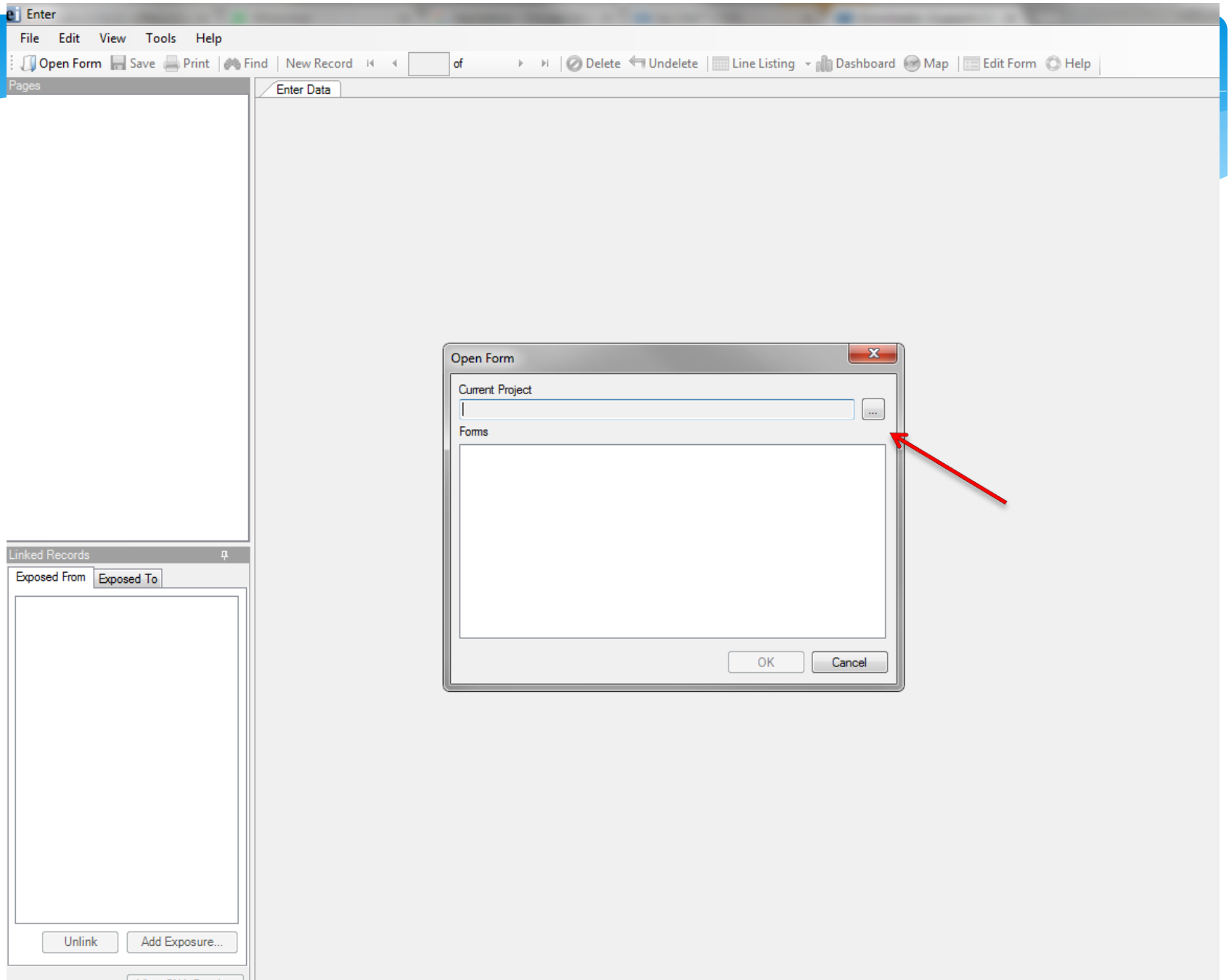


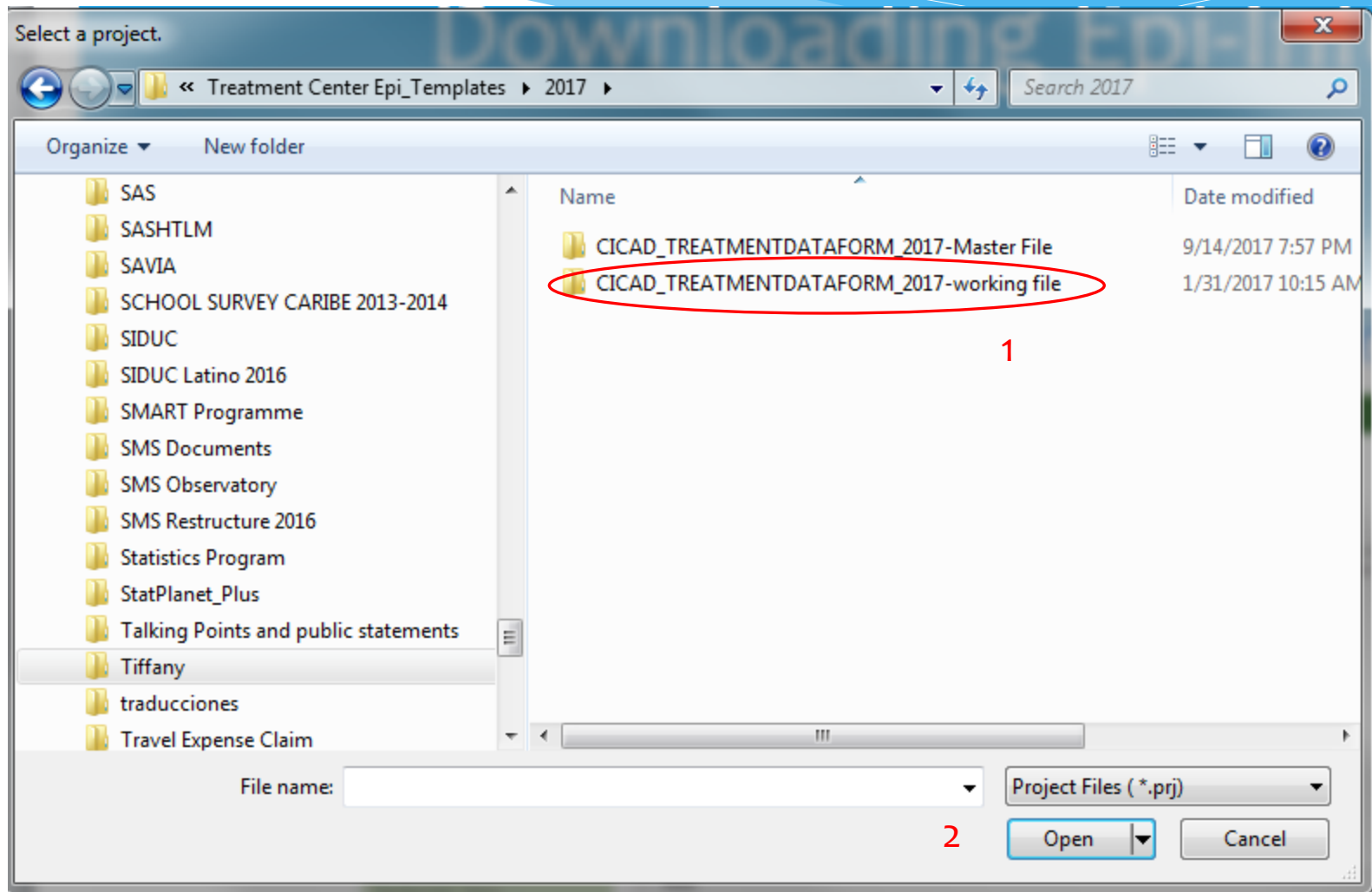


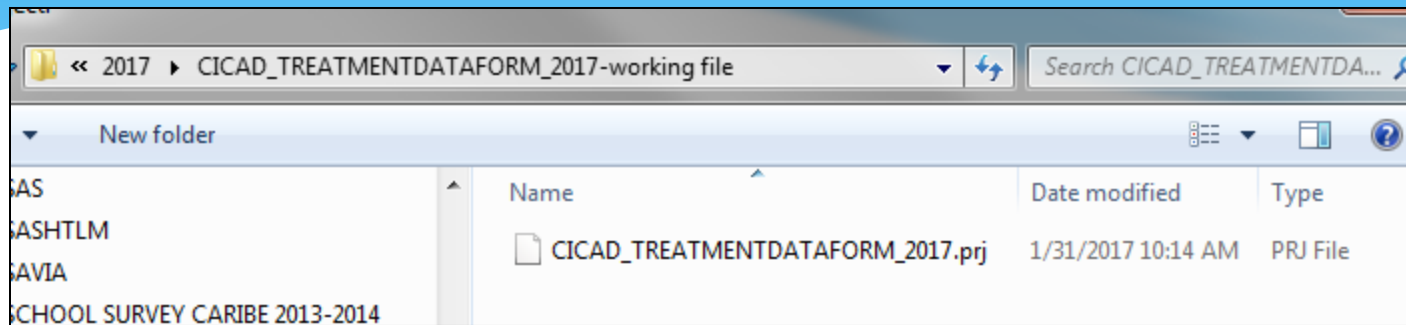
the working file is what I will
upload into the Epi-info software



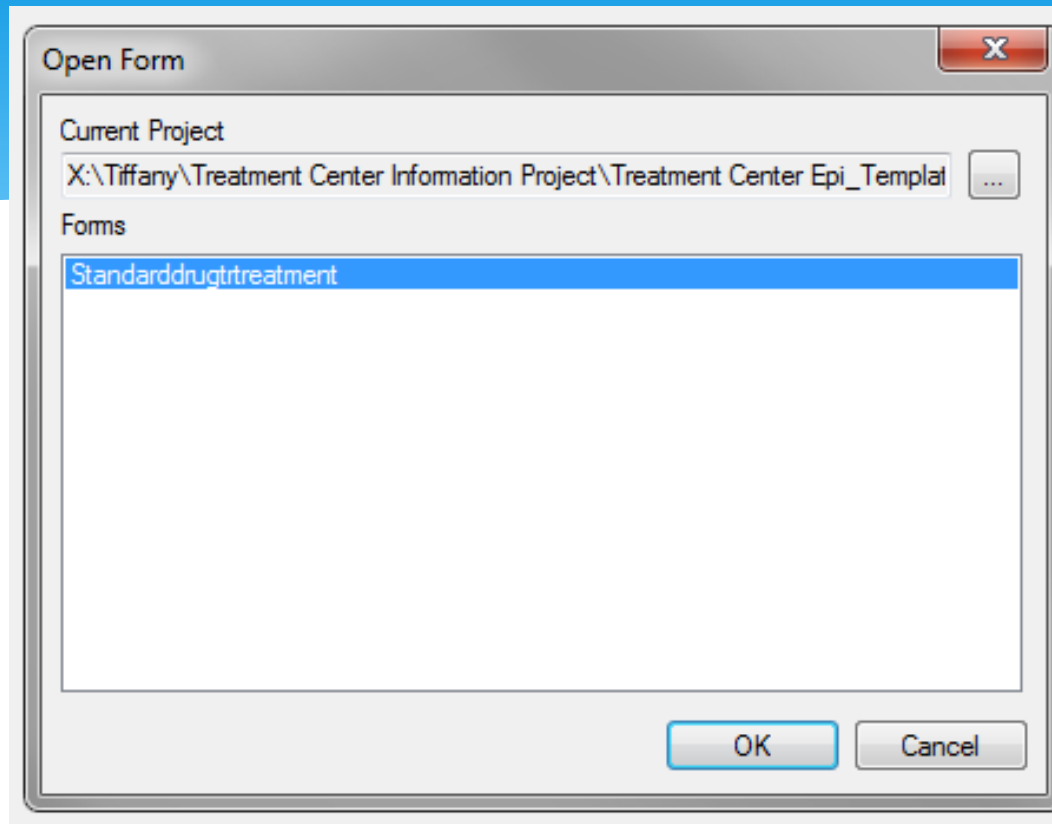








once you click open, you will
only see the .prg file... select
that



Click ok



Saving and Sending Epi File





Data Entry

Pages

Standarddrugtrtreatment

Items 1 to 7

Items 8 to 11

Items 12 to 15

Items 16 to 19

Item 20

Items 21 to 24

Items 1 to 7

STANDARD DRUG TREATMENT REGISTRATION FORM

This information is being collected for research purposes only. Your confidentiality will be respected.

FORM NUMBER 1. COUNTRY 2. REPORTING CENTER CODE

3.1. DATE OF INTERVIEW

3a. DAY

3b. MONTH

3c. YEAR

3.2. DATE OF ADMISSION

3d. DAY

3e. MONTH

3f. YEAR

4. Patient code 5. SEX 6. AGE

RESIDENCE AND NATIONALITY

7a. RESIDENCE (past 30 days) (city, region or parish where you currently live)

☐ NO FIXED PLACE OF ABODE

Use the tab button and the up down arrows to navigate the questionnaire

Linked Records

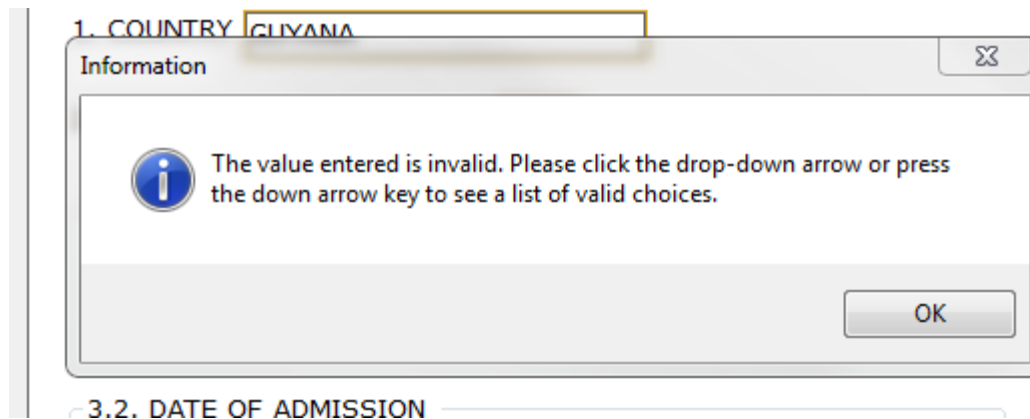
Exposed From Exposed To

Unlink

Add Exposure...

View SNA Graph...

- If you enter an invalid key, then the system will notify you



- * There are several skip patterns built into the program based on responses.
- * If you skip a mandatory field, the program will notify you at the end of the questionnaire

Enter - [CICAD_TREATMENTDATAFORM_2017/Standarddrugtrtreatment]

File Edit View Tools Help

Open Form Save Print Find New Record of 0 Delete Undo Line Listing Dashboard Map Edit Form Help

Pages

- Standarddrugtrtreatment
 - Items 1 to 7
 - Items 8 to 11
 - Items 12 to 15
 - Items 16 to 19
 - Item 20
 - Items 21 to 24

Linked Records

Exposed From Exposed To

Unlink Add Exposure... View SNA Graph...

21.2 HAVE YOU BEEN ARRESTED IN THE LAST YEAR? (IF NO, GO TO Q22)

21.3 HOW MANY TIMES WERE YOU ARRESTED IN THE LAST YEAR?

TREATMENT FOR PSYCHIATRIC CONDITION

22.1 HAVE YOU EVER BEEN TREATED FOR PSYCHIATRIC CONDITION? (IF NO, GO TO Q23)

YES

22.2 IF YES, PLEASE INDICATE THE TYPE OF CONDITION. (select as many as apply)

☐ DEPRESSION
 ☐ DO NOT REMEMBER
☐ BIPOLAR AFFECTIVE DISORDER
 ☐ DO NOT KNOW THE NAME
☐ SCHIZOPHRENIA AND OTHER PSYCHOSES
 ☐ DO NOT WISH TO RESPOND
☐ DEMENTIA
☐ DEVELOPMENTAL DISORDERS (including Autism)

Warning

5. SEX is a required field (page 1). Please fill in this field before attempting to leave the record, save data, or close the form.

OK

23. FOR ANY OF THE FOLLOWING? ARE YOU CURRENTLY IN TREATMENT

HEPATITIS B NO

HEPATITIS C NO

TUBERCULOSIS NO

24. RECOMMENDED PATIENT PLACEMENT AFTER ASSESSMENT (click more than one answer, if apply)

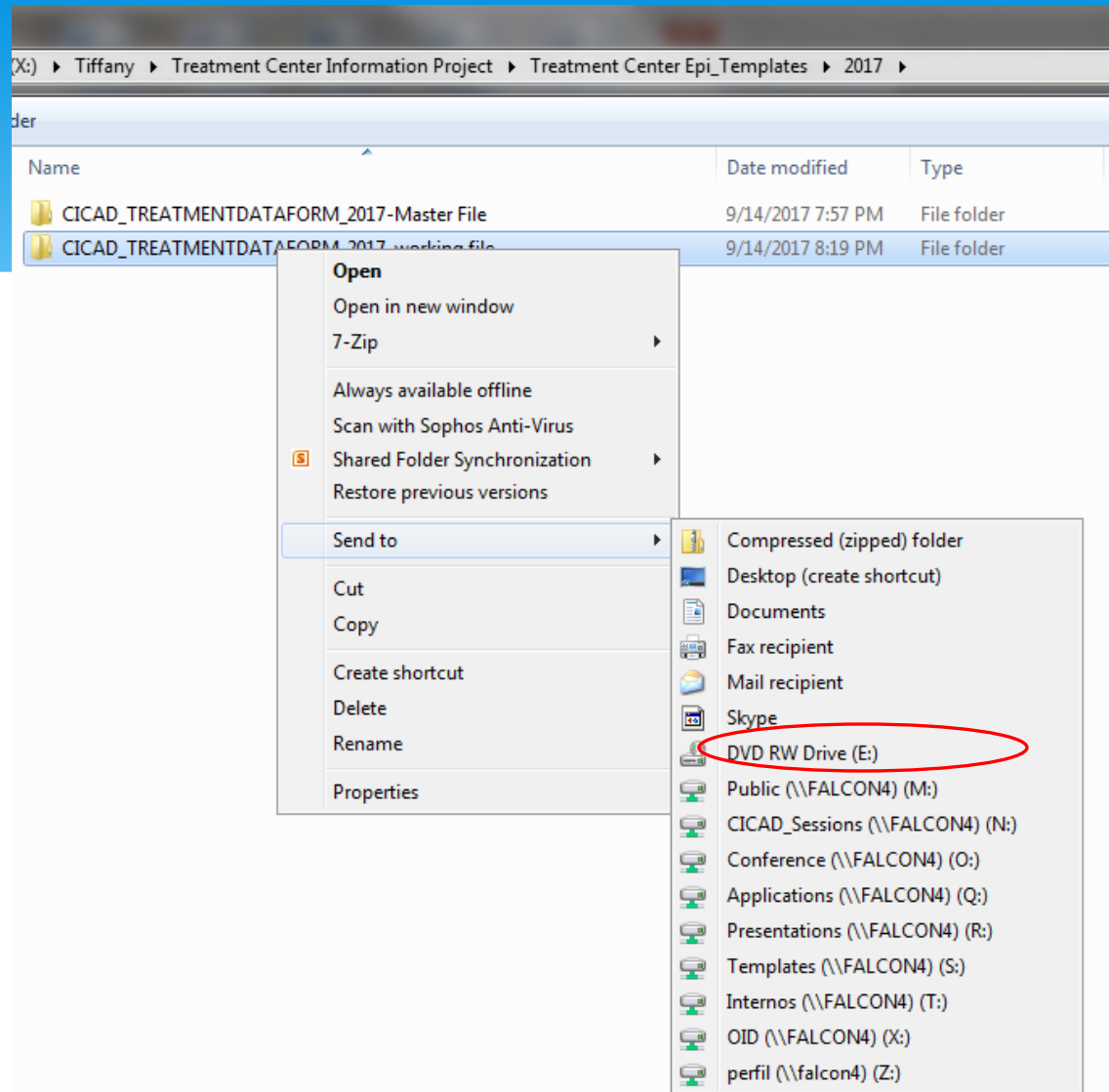
PLACEMENT AFTER ASSESSMENT

☐ OUTPATIENT
 ☐ RESIDENTIAL
☐ DAY CLINIC
 ☐ SELF-HELP (AA, NA)
☐ DETOX UNIT
 ☐ PSYCHIATRIC UNIT
☐ REFERRED TO OTHER FACILITY SPECIFY OTHER FACILITY
☒ NO RESPONSE OTHER, SPECIFY



Saving and Sending the Epi File

- * CICAD requires that countries send us data twice yearly
 - * July 31: Data from 1 January to 30 June
 - * January 31: Data from 1 July to December 31
- * Of course country coordinators are encouraged to be in regular communication with participating treatment centers and based on volume of completed paper forms, collect them at least once monthly and enter into the Epi program
 - * This allows for quality assurance checks
 - * Reduces fatigue to comply with submission deadlines
 - * Allows time to verify data in a timely manner and get feed back form the centers with any questionable information
 - * For centers who use the Epi program, the built in quality assurance check in the 2017 program should ensure that the data you submit is clean.
 - * There should always be a verification mechanism built in to ensure that all data collected is as clean as possible.

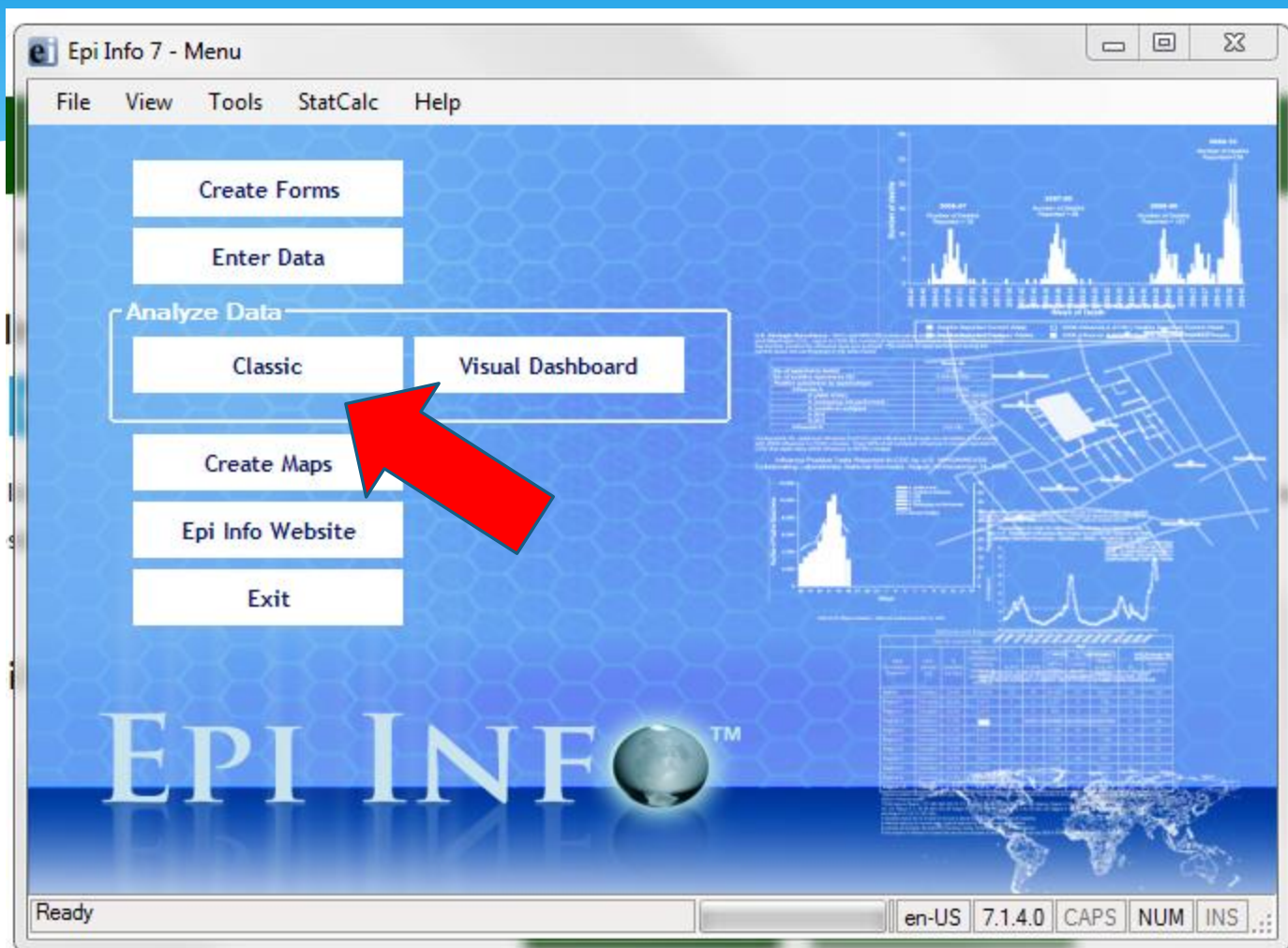


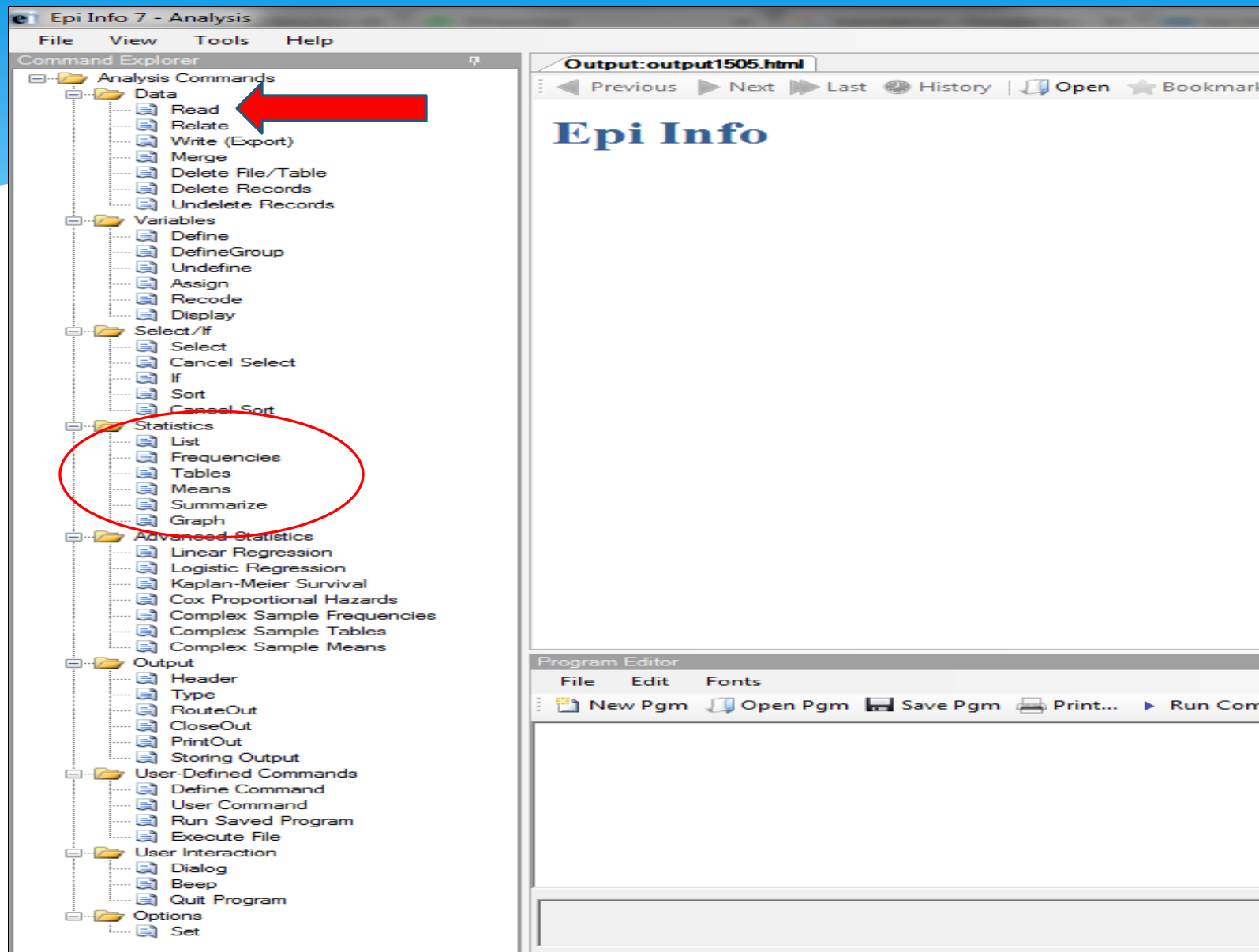
Attach the
zipped
working file to
Country
Coordinator
and CICAD

Name	Date modified	Type
CICAD_TREATMENTDATAFORM_2017-Master File	9/14/2017 7:57 PM	File folder
CICAD_TREATMENTDATAFORM_2017-working file	9/14/2017 8:19 PM	File folder
<u>CICAD_TREATMENTDATAFORM_2017-working file</u>	9/15/2017 8:34 AM	zip Archive



Data Analysis





Read

Recent Data Sources

Database Type

Epi Info 7 Project

Data Source

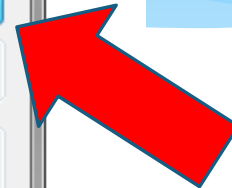
(none)

Show

☒ Forms ☐ Tables

Data Source Explorer

OK Cancel Clear Save Only Help



Select a data source.

« OID (\\FALCON4) (X:) » Tiffany » Treatment Center Information Project » DATA 2016 »

Organize ▾ New folder

▾

Recent Places

Libraries

- Documents
- Music
- Pictures
- Videos

Computer

- Local Disk (C:)
- Recovery (D:)
- Public (\\FALCON4) (M:)
- CICAD_Sessions (\\FALCON4) (N:)
- Conference (\\FALCON4) (O:)
- Applications (\\FALCON4) (Q:)
- Presentations (\\FALCON4) (R:)
- Templates (\\FALCON4) (S:)
- Internos (\\FALCON4) (T:)
- OID (\\FALCON4) (X:)**
- perfil (\\falcon4) (Z:)

Network

Name	Date modified	Type	Size
2nd half	4/18/2017 3:23 PM	File folder	
2017 package	9/14/2017 7:54 PM	File folder	
ANTIGUA	3/10/2017 6:21 PM	File folder	
BAHAMAS	10/6/2016 1:22 PM	File folder	
BARBADOS	10/7/2016 2:42 PM	File folder	
BELIZE	10/5/2016 11:51 AM	File folder	
GRENADA	11/10/2016 11:37 ...	File folder	
GUYANA	3/1/2017 1:55 PM	File folder	
HAITI	10/7/2016 12:37 PM	File folder	
Pancho Rev	5/8/2017 10:20 AM	File folder	
ST. LUCIA	10/4/2016 4:35 PM	File folder	
SURINAME	10/4/2016 11:47 AM	File folder	
TRINIDAD	12/8/2016 3:57 PM	File folder	

Select a data source.

« Tiffany » Treatment Center Information Project » DATA 2016 » HAITI »

Search HAITI

Organize ▾ New folder

Recent Places

Libraries

Documents

Music

Pictures

Videos

Computer

Local Disk (C:)

Recovery (D:)

Public (\\FALCON4) (M:)

CICAD_Sessions (\\FALCON4) (N:)

Conference (\\FALCON4) (O:)

Applications (\\FALCON4) (Q:)

Presentations (\\FALCON4) (R:)

Templates (\\FALCON4) (S:)

Internos (\\FALCON4) (T:)

OID (\\FALCON4) (X:)

perfil (\\falcon4) (Z:)

Network

Name

Date modified

Type

Size

📁	CICAD_TREATMENTFORM_JUILLET_2016	2/27/2017 3:19 PM	File folder
---	----------------------------------	-------------------	-------------

File name:

Epi Info Project File (*.prj)

Open ▾

Cancel

t a data source.



« DATA 2016 ▶ HAITI ▶ CICAD_TREATMENTFORM_JUILLET_2016



Search CICAD_TREATMENTFO...

Organize ▾ New folder



Recent Places



Libraries



Documents



Music



Pictures



Videos



Computer



Local Disk (C:)



Recovery (D:)



Public (\\FALCON4) (M:)



CICAD_Sessions (\\FALCON4) (N:)



Conference (\\FALCON4) (O:)



Applications (\\FALCON4) (Q:)



Presentations (\\FALCON4) (R:)



Templates (\\FALCON4) (S:)



Internos (\\FALCON4) (T:)



OID (\\FALCON4) (X:)



perfil (\\falcon4) (Z:)



Network

Name

Date modified

Type

Size



CICAD_TREATMENTFORM_JUNE2015.prj

9/22/2016 4:26 PM

PRJ File

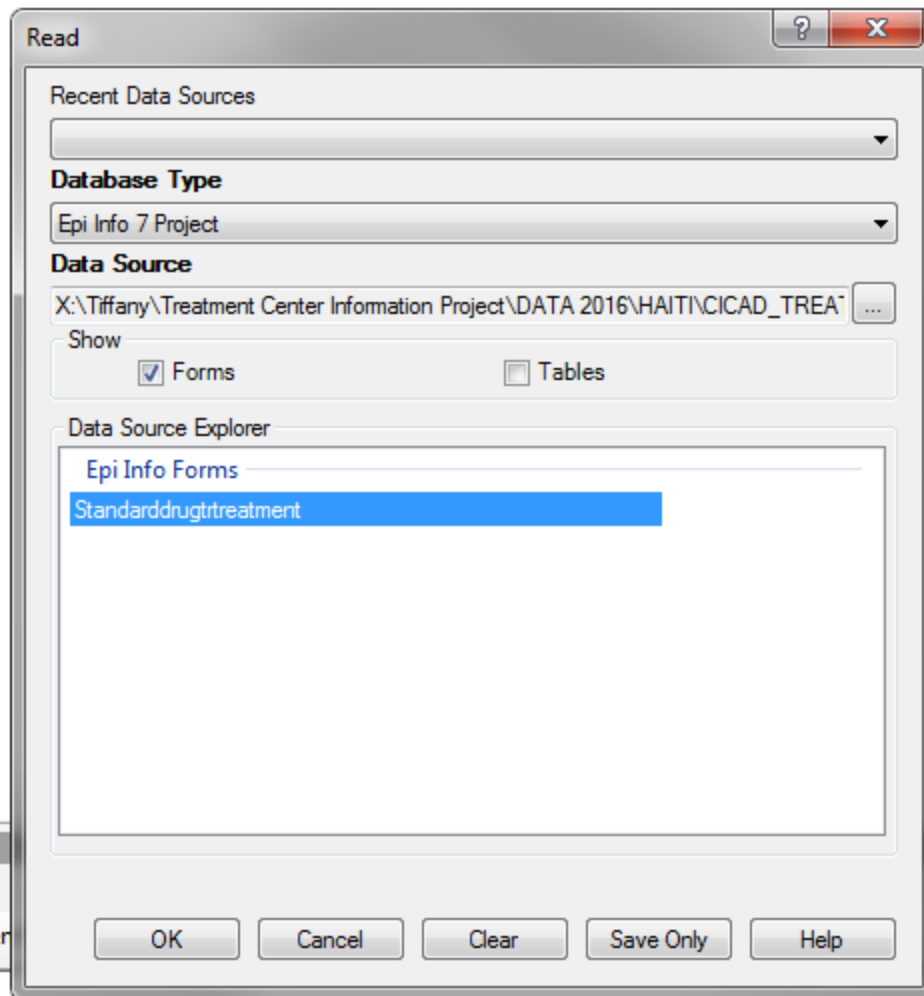
1 KB

File name:

Epi Info Project File (*.prj)

Open

Cancel



Analysis Commands

- Data
 - Read
 - Relate
 - Write (Export)
 - Merge
 - Delete File/Table
 - Delete Records
 - Undelete Records
- Variables
 - Define
 - DefineGroup
 - Undefine
 - Assign
 - Recode
 - Display
- Select/If
 - Select
 - Cancel Select
 - If
 - Sort
 - Cancel Sort
- Statistics
 - List
 - Frequencies
 - Tables
 - Means
 - Summarize
 - Graph
- Advanced Statistics
 - Linear Regression
 - Logistic Regression
 - Kaplan-Meier Survival
 - Cox Proportional Hazards
 - Complex Sample Frequencies
 - Complex Sample Tables
 - Complex Sample Means
- Output
 - Header
 - Type
 - RouteOut
 - CloseOut
 - PrintOut
 - Storing Output
- User-Defined Commands
 - Define Command
 - User Command
 - Run Saved Program
 - Execute File
- User Interaction
 - Dialog
 - Beep
 - Quit Program
- Options
 - Set

Epi Info

Current Data Source: X:\Tiffany\Treatment Center Information Project\DATA 2016\HAITI\CICAD_TREATMENTFORM_JUILLET_2016\CICAD_TREATMENTFORM_JUNE2015.prj:Standarddrugtrtreatment

Record Count: 30 (Deleted Records Excluded) *Date:* 9/14/2017 8:24:36 PM

of cases in the
file

Program Editor

```
READ {X:\Tiffany\Treatment Center Information Project\DATA 2016\HAITI\CICAD_TREATMENTFORM_JUILLET_2016\CICAD_TREATMENTFORM_JU
```

Epi Info 7 - Analysis

File View Tools Help

Command Explorer

- Analysis Commands
 - Data
 - Read
 - Relate
 - Write (Export)
 - Merge
 - Delete File/Table
 - Delete Records
 - Undelete Records
 - Variables
 - Define
 - DefineGroup
 - Undefine
 - Assign
 - Recode
 - Display
 - Select/If
 - Select
 - Cancel Select
 - If
 - Sort
 - Cancel Sort
 - Statistics
 - List
 - Frequencies ←
 - Tables
 - Means
 - Summarize
 - Graph
 - Advanced Statistics
 - Linear Regression
 - Logistic Regression
 - Kaplan-Meier Survival
 - Cox Proportional Hazards
 - Complex Sample Frequencies
 - Complex Sample Tables
 - Complex Sample Means
 - Output
 - Header
 - Type
 - RouteOut
 - CloseOut
 - PrintOut
 - Storing Output
 - User-Defined Commands
 - Define Command
 - User Command
 - Run Saved Program
 - Execute File
 - User Interaction
 - Dialog
 - Beep
 - Quit Program
 - Options
 - Set

Output: output1509.html

Previous Next Last History Open Bookmark Print

Epi Info

Current Data Source: X:\Tiffany\Treatment Center Information Project\DATA 2016\HAITI\CICAD_TREATMENTFORM_JUILLET_2016\CICAD_TREATMENTFORM_JUNE2015.prj:Standarddrugtrtreatment

Record Count: 30 (Deleted Records Excluded) Date: 9/15/2017 9:30:44 AM

Frequencies

ILL	Freq	%
+	20	35%
-	37	65%
Total	57	100%

Weight

Output to Table

Frequency of

- ABUSEDPRESCRIPTIONMEDI
- AGE
- ALCOHOL
- ALONE
- AMPHETAMINES
- ANABOLICSTERIODS
- BARBITURATES
- BENZODIAZEPINES
- BOYGIRLFRIEND
- BROTHERSISTER
- CANNABISMARIJUANAGANJA
- CENTERCODE
- CHILDCHILDREN
- COCAINE
- COCOAPASTE
- CONTAGIOUSDISEASE
- COUNTRY
- CRACKCOCAINE
- DAYCLINIC
- DETOXUNIT
- DRUGUSE
- EDUCATION
- educationlevel
- EMPLOYMENTSTATUS
- ETHNICITY
- FATHER
- FirstSaveLogonName
- FirstSaveTime
- FKEY

Stratify by

Save Only Help

Program Editor

File Edit Font

New Pgm Open Pgm Save Pgm Print

READ {X:\Tiffany\Treatment Center I

DATA 2016\HAITI\CICAD_TREATMENTFORM_JUILLET_2016\CICAD_TREATMENTFORM_JU